

Recombinant Human WBP2NL Protein, Myc/DDK-tagged, C13 and N15-labeled

Cat. No. WBP2NL-1247H **Lot. No.** (See product label)

SPECIFICATION

Product Overview	WBP2NL MS Standard C13 and N15-labeled recombinant protein (NP_689826) with a C-terminal MYC/DDK tag, was expressed in HEK293 cells.
Species	Human
Source	HEK293
Description	WBP2NL is a sperm-specific WW domain-binding protein that promotes meiotic resumption and pronuclear development during oocyte fertilization.
Molecular Mass	31.9 kDa
AA Sequence	MAVNQSHTENRRGALIPNGESLLKRSPNVELSFPQRSEGSNVFSGRKTGTLFLTSY RVIFITSCSISDPMLSFMMPFDLMTNLTVEQPVFAANFIKGTIQAAAPYGGWEGQATFK LVFRNGGAIEFAQLMVKAASAAARGFPLRTLNDWFSSMGIYVITGEGNMCTPQMPC SVIVYGAPPAGYGAPPPGYGAPPAGYGAQPVGNEGPPVGYRASPVRYGAPPLGYG APPAGYGAPPLGYGAPPLGYGTPPLGYGAPPLGYGAPPAGNEGPPAGYRASPAGS GARPHESTAAQAPENEASLPSASSSQVHSTRTRPLEQKLISEEDLAANDILDYKDD DKV
Purity	> 80% as determined by SDS-PAGE and Coomassie blue staining
Stability	Stable for 3 months from receipt of products under proper storage and handling conditions.

 Tel: 1-631-559-9269 1-516-512-3133

 Email: info@creative-biomart.com  Fax: 1-631-938-8127

 45-1 Ramsey Road, Shirley, NY 11967, USA

Storage Store at -80 centigrade. Avoid repeated freeze-thaw cycles.

Concentration 50 µg/mL as determined by BCA

Storage Buffer 100 mM glycine, 25 mM Tris-HCl, pH 7.3.

GENE INFORMATION

Gene Name WBP2NL WBP2 N-terminal like [Homo sapiens (human)]

Official Symbol WBP2NL

Synonyms WBP2NL; WBP2 N-terminal like; postacrosomal sheath WW domain-binding protein; FLJ26145; MGC26816; PAWP; postacrosomal sheath WW domain binding protein; WW domain-binding protein 2-like;

Gene ID 164684

mRNA Refseq NM_152613

Protein Refseq NP_689826

MIM 610981

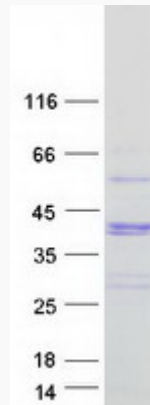
UniProt ID Q6ICG8

 Tel: 1-631-559-9269 1-516-512-3133

 Email: info@creative-biomart.com  Fax: 1-631-938-8127

 45-1 Ramsey Road, Shirley, NY 11967, USA

SDS-PAGE



 Tel: 1-631-559-9269 1-516-512-3133

 Email: info@creative-biomart.com  Fax: 1-631-938-8127

 45-1 Ramsey Road, Shirley, NY 11967, USA