

Recombinant Human WBP2NL Protein, GST-tagged

Cat. No. WBP2NL-4337H **Lot. No.** (See product label)

SPECIFICATION

Product Overview	Human MGC26816 full-length ORF (AAH22546, 1 a.a. - 309 a.a.) recombinant protein with GST-tag at N-terminal.
Species	Human
Source	Wheat Germ
Description	WBP2NL is a sperm-specific WW domain-binding protein that promotes meiotic resumption and pronuclear development during oocyte fertilization (Wu et al., 2007 [PubMed 17289678]).[supplied by OMIM]
Molecular Mass	59.73 kDa
AA Sequence	MAVNQSHTENRRGALIPNGESLLKRSPNVELSFPQRSEGSNVFSGRKTGTLFLTSY RVIFITSCSISDPMLSFMMPFDLMTNLTVEQPVFAANFIKGTIQAAPYGGWEGQATFK LVFRNGGAIEFAQLMVKAASAAARGFPLRTLNDWFSSMGIYVITGEGNMCTPQMPC SVIVYGAPPAGYGAPPPGYGAPPAGYGAQPVGNEGPPVGYRASPVRYGAPPLGYG APPAGYGAPPLGYGAPPLGYGTPPLGYGAPPLGYGAPPAGNEGPPAGYRASPAGS GARPHESTAAQAPENEASLPSASSSQVHS
Applications	Enzyme-linked Immunoabsorbent Assay Western Blot (Recombinant protein) Antibody Production Protein Array

 Tel: 1-631-559-9269 1-516-512-3133

 Email: info@creative-biomart.com  Fax: 1-631-938-8127

 45-1 Ramsey Road, Shirley, NY 11967, USA

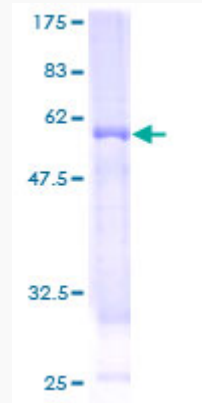
Notes	Best use within three months from the date of receipt of this protein.
Storage	Store at -80 centigrade. Aliquot to avoid repeated freezing and thawing.
Storage Buffer	50 mM Tris-HCl, 10 mM reduced Glutathione, pH=8.0 in the elution buffer.
GENE INFORMATION	
Gene Name	WBP2NL WBP2 N-terminal like [Homo sapiens]
Official Symbol	WBP2NL
Synonyms	WBP2NL; WBP2 N-terminal like; postacrosomal sheath WW domain-binding protein; FLJ26145; MGC26816; PAWP; postacrosomal sheath WW domain binding protein; WW domain-binding protein 2-like;
Gene ID	164684
mRNA Refseq	NM_152613
Protein Refseq	NP_689826
MIM	610981
UniProt ID	Q6ICG8

 Tel: 1-631-559-9269 1-516-512-3133

 Email: info@creative-biomart.com  Fax: 1-631-938-8127

 45-1 Ramsey Road, Shirley, NY 11967, USA

**Quality Control
Testing**



12.5% SDS-PAGE Stained with Coomassie Blue

 Tel: 1-631-559-9269 1-516-512-3133

 Email: info@creative-biomart.com  Fax: 1-631-938-8127

 45-1 Ramsey Road, Shirley, NY 11967, USA