

## Recombinant Human WDFY1 Protein (Met1-His410), N-His tagged

Cat. No. WDFY1-6087H Lot. No. (See product label)

### SPECIFICATION

<b>Product Overview</b>	Recombinant human WDFY1 (Met1-His410) fused with the N-His tag was expressed in E. coli.
<b>Species</b>	Human
<b>Source</b>	E.coli
<b>ProteinLength</b>	Met1-His410
<b>Form</b>	Lyophilized powder/frozen liquid
<b>Molecular Mass</b>	48.63 kDa
<b>Purity</b>	> 90 % as determined by SDS-PAGE
<b>Notes</b>	For research use only.
<b>Storage</b>	Use a manual defrost freezer and avoid repeated freeze thaw cycles. Store at 2 to 8 centigrade for one week. Store at -20 to -80 centigrade for twelve months from the date of receipt.
<b>Storage Buffer</b>	0.01M PBS, pH 7.4, 0.02 % NLS
<b>Reconstitution</b>	Reconstitute in sterile water for a stock solution.

 Tel: 1-631-559-9269 1-516-512-3133

 Email: [info@creative-biomart.com](mailto:info@creative-biomart.com)  Fax: 1-631-938-8127

 45-1 Ramsey Road, Shirley, NY 11967, USA

**Shipping** They are shipped out with dry ice/blue ice unless customers require otherwise.

## GENE INFORMATION

**Gene Name** WDFY1 WD repeat and FYVE domain containing 1 [ Homo sapiens (human) ]

**Official Symbol** WDFY1

**Synonyms** WDFY1; WD repeat and FYVE domain containing 1; WD40 and FYVE domain containing 1; WD repeat and FYVE domain-containing protein 1; FENS 1; KIAA1435; WDF1; ZFYVE17; phosphoinositide-binding protein 1; phosphoinositide-binding protein SR1; WD40- and FYVE domain-containing protein 1; zinc finger FYVE domain-containing protein 17; FENS-1;

**Gene ID** 57590

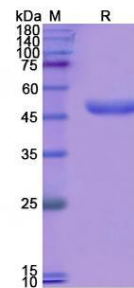
**mRNA Refseq** NM\_020830

**Protein Refseq** NP\_065881

**MIM** 618080

**UniProt ID** Q8IWB7

### SDS-PAGE



Tel: 1-631-559-9269 1-516-512-3133

Email: [info@creative-biomart.com](mailto:info@creative-biomart.com) Fax: 1-631-938-8127

45-1 Ramsey Road, Shirley, NY 11967, USA