

## Recombinant Human WDPCP Protein (1-722 aa), GST-tagged

Cat. No. WDPCP-1059M Lot. No. (See product label)

### SPECIFICATION

<b>Product Overview</b>	Recombinant Human WDPCP Protein (1-722 aa) is produced by E. coli expression system. This protein is fused with a GST tag at the N-terminal. Protein Description: Full Length.
<b>Species</b>	Human
<b>Source</b>	E.coli
<b>ProteinLength</b>	1-722 aa
<b>Description</b>	Probable effector of the planar cell polarity signaling pathway which regulates the septin cytoskeleton in both ciliogenesis and collective cell movents.
<b>Form</b>	Tris-based buffer, 50% glycerol
<b>Molecular Mass</b>	108.7 kDa
<b>AA Sequence</b>	MSFCLTELHLWSLKSTLHIADRDIGVYQYYDKKDPVSATEHGNLEEKQRLAESRDY PWTLKNRRPEKLRDSLKELEELMQSSPCVLSKWKSKYICQLLFGSGVLVLSLSLSP QLEKVVIDRSLVGKLISDTISDALLTDSFIILSFLAQNKLCFIQFTKKMDSL DGNKRLEK LSALDLKISYYDIPGPANRTIDRHLAVNSTQDLVVCWWPLVSDDVWPWTPVSSEKD RANMLLLGFTQGGLEVLSFVRTEWSPLDVHFGTKQPYQVFTVECSVSVDKPEMAD SCIYESVRNKLHCVSVTRIPLRSKAISCCRNSTEDKLIVGCEDSSVILYEAHRGVTLA QAELRPSLISCHPSGAILLVGSNQGELQIFDIALSPINIQLLAEDYSPKETLQFKKFFDV SSSLVQM QWMAPPVVFQKPKRGEICDLLFLRFNKGPLGVLLFKLGILTRGQLGLVDLI

 Tel: 1-631-559-9269 1-516-512-3133

 Email: [info@creative-biomart.com](mailto:info@creative-biomart.com)  Fax: 1-631-938-8127

 45-1 Ramsey Road, Shirley, NY 11967, USA

LQYIHYSEVYEAISILRSMDWDTLGQQCLIGMGTIVNHLLRQRLTPEREAQLEASLGT  
 FYAPTRPLLDTTILEYREPVSKYARRLFHHLLRYKRFEKAFLLAVDIGARDLFMDIHYL  
 ALDMGELALAEVARRRAHDIDVESVSSGVELLGPLDRRDMLNEGFASSALMPEGEN  
 KFPGLLPSIGSTHMQTLQQKIPNGPSSRWAIERRTEEEEEEEEEEEEEELCTDSSGAT  
 TWNAEGELKEDQRKQDIGDVGSLRMVHFGLV

**Purity** > 90% as determined by SDS-PAGE.

**Notes** Repeated freezing and thawing is not recommended. Store working aliquots at 4 centigrade for up to one week.

**Storage** The shelf life is related to many factors, storage state, buffer ingredients, storage temperature and the stability of the protein itself. Generally, the shelf life of liquid form is 6 months at -20 centigrade/-80 centigrade. The shelf life of lyophilized form is 12 months at -20 centigrade/-80 centigrade.

**Concentration** A hardcopy of COA with concentration instruction is sent along with the products.

## GENE INFORMATION

**Gene Name** [WDPCP WD repeat containing planar cell polarity effector \[ Homo sapiens \]](#)

**Official Symbol** [WDPCP](#)

**Synonyms** WDPCP; BBS15; fritz; hFritz; FRTZ; FRITZ; C2orf86; DKFZp686C12204;

**Gene ID** [51057](#)

**mRNA Refseq** [NM\\_015910](#)

**Protein Refseq** [NP\\_056994](#)

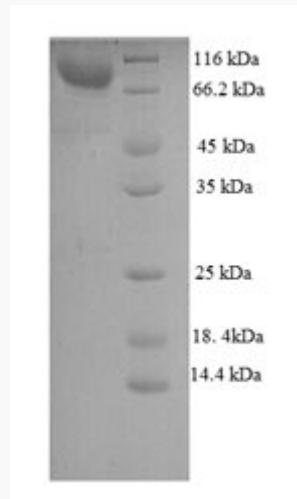
 Tel: 1-631-559-9269 1-516-512-3133

 Email: [info@creative-biomart.com](mailto:info@creative-biomart.com)  Fax: 1-631-938-8127

 45-1 Ramsey Road, Shirley, NY 11967, USA

MIM 613580

UniProt ID Q8C456



(Tris-Glycine gel) Discontinuous SDS-PAGE (reduced) with 5% enrichment gel and 15% separation gel.

Tel: 1-631-559-9269 1-516-512-3133

Email: [info@creative-biomart.com](mailto:info@creative-biomart.com) Fax: 1-631-938-8127

45-1 Ramsey Road, Shirley, NY 11967, USA