

Recombinant Human WDR1 Protein (189-461 aa), GST-tagged

Cat. No. WDR1-1213H Lot. No. (See product label)

SPECIFICATION

Product Overview	Recombinant Human WDR1 Protein (189-461 aa) is produced by E. coli expression system. This protein is fused with a GST tag at the N-terminal. Research Area: Signal Transduction. Protein Description: Partial.
Species	Human
Source	E.coli
ProteinLength	189-461 aa
Description	Induces disassembly of actin filaments in conjunction with ADF/cofilin family proteins.
Form	Tris-based buffer, 50% glycerol
Molecular Mass	56.4 kDa
AA Sequence	SRFVNCVRFSPDGNRFATASADGQIYIDGKTGEKVCALGGSKAHDGGIYAIWSP DSTHLLSASGDKTSKIWDVSVNSVSTFPMGSTVLDQQLGCLWQKDHLLSVLSGY INYLDRNNSKPLHVIKGHSKSIQCLTVHKNGGKSYIYSGSHDGHINYWDSETGEND SFAGKGHTNQVSRMTVDESGQLISCSMDDTVRYTSLMLRDYSGQGVVKLDVQPKC VAVGPGGYAVVVCIGQIVLLKDQRKCFSIDNPGYEPEVVAVHPGGDTVA
Purity	> 90% as determined by SDS-PAGE.
Notes	Repeated freezing and thawing is not recommended. Store working aliquots at 4

 Tel: 1-631-559-9269 1-516-512-3133

 Email: info@creative-biomart.com  Fax: 1-631-938-8127

 45-1 Ramsey Road, Shirley, NY 11967, USA

centigrade for up to one week.

Storage

The shelf life is related to many factors, storage state, buffer ingredients, storage temperature and the stability of the protein itself. Generally, the shelf life of liquid form is 6 months at -20 centigrade/-80 centigrade. The shelf life of lyophilized form is 12 months at -20 centigrade/-80 centigrade.

Concentration

A hardcopy of COA with reconstitution instruction is sent along with the products. Please refer to it for detailed information.

GENE INFORMATION

Gene Name [WDR1 WD repeat domain 1 \[Homo sapiens \]](#)

Official Symbol [WDR1](#)

Synonyms [WDR1](#); [WD repeat domain 1](#); [AIP1](#); [NORI-1](#);

Gene ID [9948](#)

mRNA Refseq [NM_005112](#)

Protein Refseq [NP_005103](#)

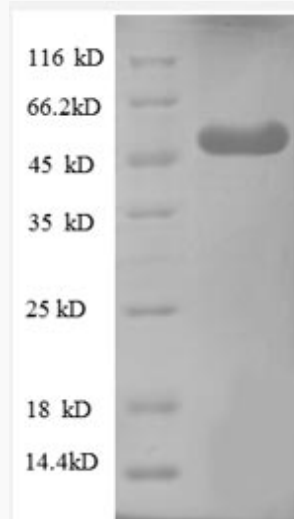
MIM [604734](#)

UniProt ID [O75083](#)

 Tel: 1-631-559-9269 1-516-512-3133

 Email: info@creative-biomart.com  Fax: 1-631-938-8127

 45-1 Ramsey Road, Shirley, NY 11967, USA



(Tris-Glycine gel) Discontinuous SDS-PAGE (reduced) with 5% enrichment gel and 15% separation gel.

 Tel: 1-631-559-9269 1-516-512-3133

 Email: info@creative-biomart.com  Fax: 1-631-938-8127

 45-1 Ramsey Road, Shirley, NY 11967, USA