

Recombinant Human WDR36 Protein, Myc/DDK-tagged, C13 and N15-labeled

Cat. No. WDR36-5330H Lot. No. (See product label)

SPECIFICATION

Product Overview

WDR36 MS Standard C13 and N15-labeled recombinant protein (NP_644810) with a C-terminal MYC/DDK tag, was expressed in HEK293 cells.

Species

Human

Source

HEK293

Description

This gene encodes a member of the WD repeat protein family. WD repeats are minimally conserved regions of approximately 40 amino acids typically bracketed by gly-his and trp-asn (GH-WD), which may facilitate formation of heterotrimeric or multiprotein complexes. Members of this family are involved in a variety of cellular processes, including cell cycle progression, signal transduction, apoptosis, and gene regulation. Mutations in this gene have been associated with adult-onset primary open-angle glaucoma (POAG).

Molecular Mass

105.3 kDa

AA Sequence

MCCTEGSLRKRDSQRAPEAVLCLQLWQRTVPLDTLKGLGTCFPSGPELRGAGIAAA
 MERASERRTASALFAGFRALGLFSNDIPHVVRFSAKRRFYVTTTCVGKSFHTYDVQK
 LSLVAVSNSVPQDICCMAADGRLVFAAYGNVFSAFARNKEIVHTFKGHKAEIHFLQP
 FGDHII SVDTDGILIIWHIYSEEEYLQLTFDKSVFKISAILHPSTYLNKILLGSEQGSLQL
 WNVKSNKLLYTFPGWKVGVLTALQQAPAVDVVAIGLMSGQVIIHNIKFNETLMKFRQD
 WGPITSISFRTDGHPVMAAGSPCGHIGLWDLEDKKLINQMRNAHSTAIAGLTFLHRE

 Tel: 1-631-559-9269 1-516-512-3133

 Email: info@creative-biomart.com  Fax: 1-631-938-8127

 45-1 Ramsey Road, Shirley, NY 11967, USA

PLLVTNGADNALRIWIFDGPTGEGRLLRFRMGHSAPLTNIRYYGQNGQQILSASQDG
 TLQSFSTVHEKFNKSLGHGLINKKRVRKRKGLQNTMSVRLPPITKFAAEEAARESDWDG
 IIACHQGKLS CSTWNYQKSTIGAYFLKPKELKKDDITATAVDITSCGNFAVIGLSSGTV
 DVYNMQSGIHRGSGFGKDQAHKGSVRGVAVDGLNQLTVTTGSEGLLKFWNFKNKILI
 HSVSLSSSPNIMLLHRDSGILGLALDDFSISVLDIETRKIVREFSGHQGQINDMAFSPD
 GRWLISAAMDCSIRTWDLPSGCLIDCFLLDSAPLNVSMSPTGDFLATSHVDHLGIYL
 WSNISLYSVVSLRPLPADYVPSIVMLPGTCQTQDVEVSEETVEPSDELIEYDSPEQLN
 EQLVTLSELLPESRWKNLLNLDVIKKKNPKPEPPKVPKSAPFFIPTIPGLVPRYAAPEQ
 NNDPQQSKVVNLGVLAQKSDFCLEGLVNNKYDTALNLLKESGPSGIETELRSL
 PDCGGSIEVMQSFLKMIGMMLDRKRFELAQAYLALFLKLHLKMLPSEPVLLLEEITNL
 SSQVEENWTHLQSLFNQSMCILNYLKSALLTRTRPLEQKLISEEDLAANDILDYKDDD
 DKV

Purity > 80% as determined by SDS-PAGE and Coomassie blue staining

Stability Stable for 3 months from receipt of products under proper storage and handling conditions.

Storage Store at -80 centigrade. Avoid repeated freeze-thaw cycles.

Concentration 50 µg/mL as determined by BCA

Storage Buffer 100 mM glycine, 25 mM Tris-HCl, pH 7.3.

GENE INFORMATION

Gene Name WDR36 WD repeat domain 36 [Homo sapiens (human)]

Official Symbol WDR36

Synonyms WDR36; WD repeat domain 36; glaucoma 1, open angle, G, GLC1G; WD repeat-

 Tel: 1-631-559-9269 1-516-512-3133

 Email: info@creative-biomart.com  Fax: 1-631-938-8127

 45-1 Ramsey Road, Shirley, NY 11967, USA

containing protein 36; TA WDRP; UTP21; T-cell activation WD repeat protein; T-cell activation WD repeat-containing protein; GLC1G; TAWDRP; TA-WDRP; DKFZp686I1650;

Gene ID 134430

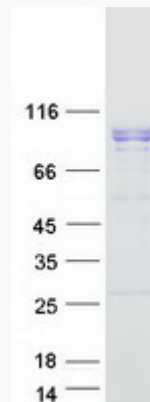
mRNA Refseq NM_139281

Protein Refseq NP_644810

MIM 609669

UniProt ID Q8NI36

SDS-PAGE



 Tel: 1-631-559-9269 1-516-512-3133

 Email: info@creative-biomart.com  Fax: 1-631-938-8127

 45-1 Ramsey Road, Shirley, NY 11967, USA