

## Recombinant Human WDR38 Protein (1-314 aa), GST-tagged

Cat. No. WDR38-2141H Lot. No. (See product label)

### SPECIFICATION

<b>Product Overview</b>	Recombinant Human WDR38 Protein (1-314 aa) is produced by E. coli expression system. This protein is fused with a GST tag at the N-terminal. Protein Description: Full Length.
<b>Species</b>	Human
<b>Source</b>	E.coli
<b>ProteinLength</b>	1-314 aa
<b>Form</b>	Tris-based buffer,50% glycerol
<b>Molecular Mass</b>	61.3 kDa
<b>AA Sequence</b>	MNSGV <sup>P</sup> ATLAVRRVKFFGQHGGEVNSSAFSPDGQMLLTGSE <sup>D</sup> GCVYGWETRSGQ LLWRLGGHTGPVKFCRFSPDGHLFASASCDCTVRLWDVARAKCLRVLK <sup>G</sup> HQRSVE TVSFSPDSRQLASGGWDKRVMLWDVQSGQMLRLLVGHRDSIQSSDFSP <sup>T</sup> VNCLAT GSWDSTVHIWDLRMVTPAVSHQALEGHSANISCLCYSASGLLASGSWDKTIHIWKP TTSSLLIQLKGHVTVVKSIAFSPDELWLASAGYSRMV <sup>K</sup> VWDCNTGKCLETLKGVL <sup>D</sup> V AHTCAFTPDGKILVSGAADQTRRQISRTSKSPRDPQT
<b>Purity</b>	> 90% as determined by SDS-PAGE.
<b>Notes</b>	Repeated freezing and thawing is not recommended. Store working aliquots at 4 centigrade for up to one week.

 Tel: 1-631-559-9269 1-516-512-3133

 Email: [info@creative-biomart.com](mailto:info@creative-biomart.com)  Fax: 1-631-938-8127

 45-1 Ramsey Road, Shirley, NY 11967, USA

**Storage**

The shelf life is related to many factors, storage state, buffer ingredients, storage temperature and the stability of the protein itself. Generally, the shelf life of liquid form is 6 months at -20 centigrade/-80 centigrade. The shelf life of lyophilized form is 12 months at -20 centigrade/-80 centigrade.

**Concentration**

A hardcopy of COA will be sent along with the products. Please refer to it for detailed information.

## GENE INFORMATION

**Gene Name**

WDR38 WD repeat domain 38 [ Homo sapiens (human) ]

**Official Symbol**

WDR38

**Synonyms**

WDR38;

**Gene ID**

401551

**mRNA Refseq**

NM\_001045476

**Protein Refseq**

NP\_001038941

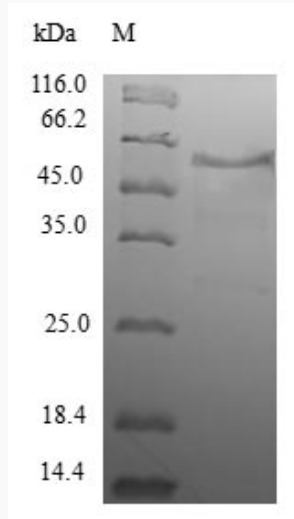
**UniProt ID**

Q5JTN6

 Tel: 1-631-559-9269 1-516-512-3133

 Email: [info@creative-biomart.com](mailto:info@creative-biomart.com)  Fax: 1-631-938-8127

 45-1 Ramsey Road, Shirley, NY 11967, USA



(Tris-Glycine gel) Discontinuous SDS-PAGE (reduced) with 5% enrichment gel and 15% separation gel.

 Tel: 1-631-559-9269 1-516-512-3133

 Email: [info@creative-biomart.com](mailto:info@creative-biomart.com)  Fax: 1-631-938-8127

 45-1 Ramsey Road, Shirley, NY 11967, USA