

Recombinant Human WDR46 Protein, MYC/DDK-tagged, C13 and N15-labeled

Cat. No. WDR46-273H Lot. No. (See product label)

SPECIFICATION

Product Overview

WDR46 MS Standard C13 and N15-labeled recombinant protein (NP_005443) with a C-terminal MYC/DDK tag, was expressed in HEK293 cells.

Species

Human

Source

HEK293

Description

Scaffold component of the nucleolar structure. Required for localization of DDX21 and NCL to the granular compartment of the nucleolus.

Molecular Mass

68 kDa

AA Sequence

METAPKPGKDVPKDKLQTKRKKPRRYWEEETVPTTAGASPGPPRNKKNRELRP
QRPKNAYILKKSRIKPKQVPKPREWKNPESQRGLSGAQDPFPGPAPVPVEVVQK
FCRIDKSRKLPKSKAKTRSRLEVAEAEETSIKAARSELLAEPPGFLEGEDGEDTA
KICQADIVEAVDIASAAKHFDLNLRFQGPYRLNYSRTGRHLAFGGRRGHVAALDWVT
KKLMCEINVMEAVRDIRFLHSEALLAVAQNRWLHIYDNQGIELHCIRRCRDRVTRLEFL
PFHFLLATASETGFLTYLDVSVGKIVAALNARAGRLDVMSPYNAVIHLGHSNGTV
SLWSPAMKEPLAKILCHRGGVRAVAVDSTGTYMATSGLDHQLKIFDLRGTYQPLST
RTLPHGAGHLAFSQRGLLVAGMGDVVNIWAGQGKASPPSLEQPYLTHRLSGPVHG
LQFCPFEDVLGVGHTGGITSMLVPGAGEPNFDGLESNPYRSRKQRQEWKALLE
KVPAELICLDPRALAEVDVISLEQGGKEQIERLGYPQAKAPFQPKPKQKGRSSTASL
VKRKRKVMDEEHRDKVRQSLQQQHHEAKAKPTGARPSALDRFVRTRTRPLEQKLI

Tel: 1-631-559-9269 1-516-512-3133

Email: info@creative-biomart.com Fax: 1-631-938-8127

45-1 Ramsey Road, Shirley, NY 11967, USA

SEEDLAANDILDYKDDDDKV

Purity > 80% as determined by SDS-PAGE and Coomassie blue staining

Stability Stable for 3 months from receipt of products under proper storage and handling conditions.

Storage Store at -80 centigrade. Avoid repeated freeze-thaw cycles.

Concentration 50 µg/mL as determined by BCA

Storage Buffer 100 mM glycine, 25 mM Tris-HCl, pH 7.3.

GENE INFORMATION

Gene Name [WDR46 WD repeat domain 46 \[Homo sapiens \(human\) \]](#)

Official Symbol [WDR46](#)

Synonyms WDR46; WD repeat domain 46; C6orf11, chromosome 6 open reading frame 11; WD repeat-containing protein 46; BING4; UTP7; WD repeat-containing protein BING4; FP221; C6orf11;

Gene ID [9277](#)

mRNA Refseq [NM_005452](#)

Protein Refseq [NP_005443](#)

MIM [611440](#)

 Tel: 1-631-559-9269 1-516-512-3133

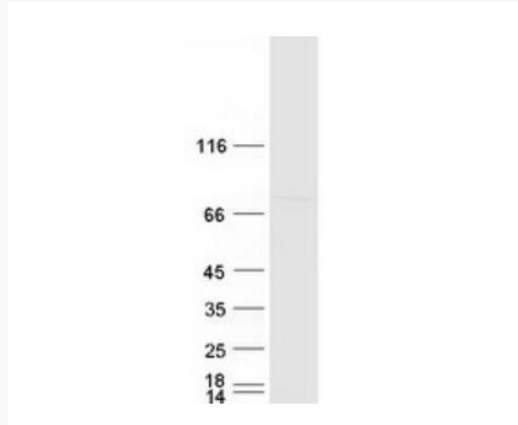
 Email: info@creative-biomart.com  Fax: 1-631-938-8127

 45-1 Ramsey Road, Shirley, NY 11967, USA

UniProt ID

O15213

SDS-PAGE



 Tel: 1-631-559-9269 1-516-512-3133

 Email: info@creative-biomart.com  Fax: 1-631-938-8127

 45-1 Ramsey Road, Shirley, NY 11967, USA