

## Recombinant Human WDR5 Protein (Met1-Lys120), N-His tagged

Cat. No. WDR5-5590H    Lot. No. (See product label)

### SPECIFICATION

<b>Product Overview</b>	Recombinant human WDR5 (Met1-Lys120) fused with the N-His tag was expressed in E. coli.
<b>Species</b>	Human
<b>Source</b>	E.coli
<b>ProteinLength</b>	Met1-Lys120
<b>Form</b>	Lyophilized powder/frozen liquid
<b>Molecular Mass</b>	15.14 kDa
<b>Purity</b>	> 90 % as determined by SDS-PAGE
<b>Notes</b>	For research use only.
<b>Storage</b>	Use a manual defrost freezer and avoid repeated freeze thaw cycles. Store at 2 to 8 centigrade for one week. Store at -20 to -80 centigrade for twelve months from the date of receipt.
<b>Storage Buffer</b>	0.01M PBS, pH 7.4, 0.02 % NLS
<b>Reconstitution</b>	Reconstitute in sterile water for a stock solution.

 Tel: 1-631-559-9269    1-516-512-3133

 Email: [info@creative-biomart.com](mailto:info@creative-biomart.com)     Fax: 1-631-938-8127

 45-1 Ramsey Road, Shirley, NY 11967, USA

**Shipping** They are shipped out with dry ice/blue ice unless customers require otherwise.

## GENE INFORMATION

**Gene Name** WDR5 WD repeat domain 5 [ Homo sapiens (human) ]

**Official Symbol** WDR5

**Synonyms** WDR5; WD repeat domain 5; WD repeat-containing protein 5; SWD3; Set1c WD40 repeat protein; homolog (S. cerevisiae); WD-repeat protein 5; BMP2-induced 3-kb gene protein; SWD3, Set1c WD40 repeat protein, homolog; BIG-3;

**Gene ID** 11091

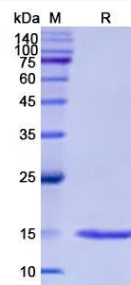
**mRNA Refseq** NM\_017588

**Protein Refseq** NP\_060058

**MIM** 609012

**UniProt ID** P61964

## SDS-PAGE



Tel: 1-631-559-9269 1-516-512-3133

Email: [info@creative-biomart.com](mailto:info@creative-biomart.com) Fax: 1-631-938-8127

45-1 Ramsey Road, Shirley, NY 11967, USA