

Recombinant Human WDR61 Protein, MYC/DDK-tagged, C13 and N15-labeled

Cat. No. WDR61-140H **Lot. No.** (See product label)

SPECIFICATION

Product Overview	WDR61 MS Standard C13 and N15-labeled recombinant protein (NP_079510) with a C-terminal MYC/DDK tag, was expressed in HEK293 cells.
Species	Human
Source	HEK293
Description	WDR61 is a subunit of the human PAF and SKI complexes, which function in transcriptional regulation and are involved in events downstream of RNA synthesis, such as RNA surveillance.
Molecular Mass	33.6 kDa
AA Sequence	MTNQYGILFKQEQAHDDAIWSVAWGTVNKKENSETVVTGSLDDLKVVWWRDERLD LQWSLEGHQLGVVSVDISHTLPIAASSSLDAHIRLWDLKQIKSIDAGPVDATLA FSPDSQYLATGTHVGVNIFGVESGKKEYSLDTRGKFIISIAYSPDGKYLASGAIDGII NIFDIATGKLLHTLEGHAMPIRSLTFSPDSQLLVASDDGYIKIYDVQHANLAGTSLGH ASWVLNVAFCPDDTHFVSSSSDKSVKVDVVGTRTCVHTFFDHQDQVWGKYNNGN GSKIVSVGDDQEIHIYDCPITRTRPLEQKLISEEDLAANDILDYKDDDDKV
Purity	> 80% as determined by SDS-PAGE and Coomassie blue staining
Stability	Stable for 3 months from receipt of products under proper storage and handling conditions.

 Tel: 1-631-559-9269 1-516-512-3133

 Email: info@creative-biomart.com  Fax: 1-631-938-8127

 45-1 Ramsey Road, Shirley, NY 11967, USA

Storage	Store at -80 centigrade. Avoid repeated freeze-thaw cycles.
----------------	---

Concentration	50 µg/mL as determined by BCA
----------------------	-------------------------------

Storage Buffer	100 mM glycine, 25 mM Tris-HCl, pH 7.3.
-----------------------	---

GENE INFORMATION

Gene Name	WDR61 WD repeat domain 61 [Homo sapiens (human)]
------------------	--

Official Symbol	WDR61
------------------------	-------

Synonyms	REC14; SKI8; WD repeat-containing protein 61; SKI8 homolog; meiotic recombination REC14 protein homolog; recombination protein REC14
-----------------	--

Gene ID	80349
----------------	-------

mRNA Refseq	NM_025234
--------------------	-----------

Protein Refseq	NP_079510
-----------------------	-----------

MIM	609540
------------	--------

UniProt ID	Q9GZS3
-------------------	--------

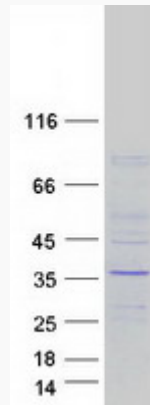
 Tel: 1-631-559-9269 1-516-512-3133

 Email: info@creative-biomart.com  Fax: 1-631-938-8127

 45-1 Ramsey Road, Shirley, NY 11967, USA



SDS-PAGE



Tel: 1-631-559-9269 1-516-512-3133

Email: info@creative-biomart.com Fax: 1-631-938-8127

45-1 Ramsey Road, Shirley, NY 11967, USA