

Recombinant Human WDR83 Protein, GST-tagged

Cat. No. WDR83-5286H **Lot. No.** (See product label)

SPECIFICATION

Product Overview	Human MGC4238 partial ORF (NP_115708, 171 a.a. - 262 a.a.) recombinant protein with GST-tag at N-terminal.
Species	Human
Source	Wheat Germ
Description	This gene encodes a member of the WD-40 protein family. The protein is proposed to function as a molecular scaffold for various multimeric protein complexes. The protein associates with several components of the extracellular signal-regulated kinase (ERK) pathway, and promotes ERK activity in response to serum or other signals. The protein also interacts with egl nine homolog 3 (EGLN3, also known as PHD3) and regulates expression of hypoxia-inducible factor 1, and has been purified as part of the spliceosome. Alternative splicing results in multiple transcript variants. [provided by RefSeq, Oct 2009]
Molecular Mass	35.86 kDa
AA Sequence	VDGRVRRYDLRMGQLFSDYVGSPITCTCFSRDGQCTLVSSLDSTLRLLLDKDTGELL GEYKGHKNQEYKLDCCLSERDTHVVSCSEDGKVFFW
Applications	Enzyme-linked Immunoabsorbent Assay Western Blot (Recombinant protein) Antibody Production Protein Array

 Tel: 1-631-559-9269 1-516-512-3133

 Email: info@creative-biomart.com  Fax: 1-631-938-8127

 45-1 Ramsey Road, Shirley, NY 11967, USA

Notes	Best use within three months from the date of receipt of this protein.
Storage	Store at -80 centigrade. Aliquot to avoid repeated freezing and thawing.
Storage Buffer	50 mM Tris-HCl, 10 mM reduced Glutathione, pH=8.0 in the elution buffer.
GENE INFORMATION	
Gene Name	WDR83 WD repeat domain 83 [Homo sapiens (human)]
Official Symbol	WDR83
Synonyms	WDR83; WD repeat domain 83; MORG1; WD repeat domain-containing protein 83; MAPK organizer 1; mitogen-activated protein kinase organizer 1
Gene ID	84292
mRNA Refseq	NM_001099737
Protein Refseq	NP_001093207
MIM	616850
UniProt ID	Q9BRX9

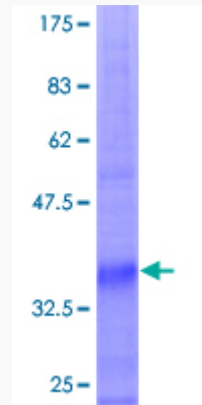
 Tel: 1-631-559-9269 1-516-512-3133

 Email: info@creative-biomart.com  Fax: 1-631-938-8127

 45-1 Ramsey Road, Shirley, NY 11967, USA

Quality Control

Testing:



12.5% SDS-PAGE Stained with Coomassie Blue.

 Tel: 1-631-559-9269 1-516-512-3133

 Email: info@creative-biomart.com  Fax: 1-631-938-8127

 45-1 Ramsey Road, Shirley, NY 11967, USA