

Recombinant Human WDR90 protein, His & T7-tagged

Cat. No. WDR90-1632H Lot. No. (See product label)

SPECIFICATION

Product Overview	Recombinant Human WDR90 aa. (Met1~Pro235 (Accession # Q96KV7)) fused with N-terminal His & T7 tag was produced in E. coli cells.
Species	Human
Source	E.coli
ProteinLength	Met1~Pro235
Form	Freeze-dried powder
Molecular Mass	Predicted Molecular Mass: 30.6kDa
Endotoxin	<1.0EU per 1ug (determined by the LAL method)
Purity	>95%
Applications	SDS-PAGE; WB; ELISA; IP.
Stability	The thermal stability is described by the loss rate. The loss rate was determined by accelerated thermal degradation test, that is, incubate the protein at 37°C for 48h, and no obvious degradation and precipitation were observed. The loss rate is less than 5% within the expiration date under appropriate storage condition.
Storage	Avoid repeated freeze/thaw cycles. Store at 2-8°C for one month. Aliquot and store at

 Tel: 1-631-559-9269 1-516-512-3133

 Email: info@creative-biomart.com  Fax: 1-631-938-8127

 45-1 Ramsey Road, Shirley, NY 11967, USA

-80°C for 12 months.

Storage buffer

Supplied as lyophilized form in 20mM Tris, 150mM NaCl, pH8.0, containing 1mM EDTA, 1mM DTT, 0.01% sarcosyl, 5% trehalose, and preservative.

Reconstitution

Reconstitute in sterile ddH₂O.

Isoelectric Point

9.9

GENE INFORMATION

Gene Name

WDR90 WD repeat domain 90 [Homo sapiens (human)]

Official Symbol

WDR90

Synonyms

WDR90; WD repeat domain 90; C16orf15; C16orf16; C16orf17; C16orf18; C16orf19; WD repeat-containing protein 90

Gene ID

197335

mRNA Refseq

NM_145294.4

Protein Refseq

NP_660337.3

UniProt ID

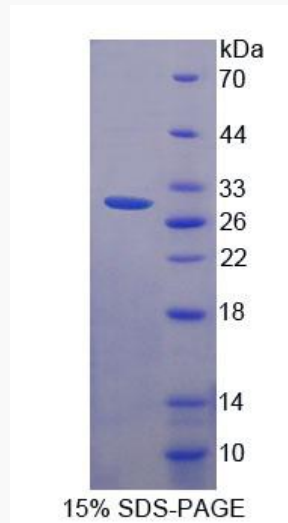
Q96KV7

 Tel: 1-631-559-9269 1-516-512-3133

 Email: info@creative-biomart.com  Fax: 1-631-938-8127

 45-1 Ramsey Road, Shirley, NY 11967, USA

SDS-PAGE



 Tel: 1-631-559-9269 1-516-512-3133

 Email: info@creative-biomart.com  Fax: 1-631-938-8127

 45-1 Ramsey Road, Shirley, NY 11967, USA