

Recombinant Human WDR90 Protein (Met1-Pro235), N-His tagged

Cat. No. WDR90-5429H Lot. No. (See product label)

SPECIFICATION

Product Overview	Recombinant human WDR90 (Met1-Pro235) fused with the N-His tag was expressed in E. coli.
Species	Human
Source	E.coli
ProteinLength	Met1-Pro235
Description	Involved in cilium assembly. Located in centriole.
Form	Lyophilized powder/frozen liquid
Molecular Mass	29.17 kDa
Purity	> 90 % as determined by SDS-PAGE
Notes	For research use only.
Storage	Use a manual defrost freezer and avoid repeated freeze thaw cycles. Store at 2 to 8 centigrade for one week. Store at -20 to -80 centigrade for twelve months from the date of receipt.
Storage Buffer	0.01M PBS, pH 7.4, 0.02 % NLS

 Tel: 1-631-559-9269 1-516-512-3133

 Email: info@creative-biomart.com  Fax: 1-631-938-8127

 45-1 Ramsey Road, Shirley, NY 11967, USA

Reconstitution Reconstitute in sterile water for a stock solution.

Shipping They are shipped out with dry ice/blue ice unless customers require otherwise.

GENE INFORMATION

Gene Name [WDR90 WD repeat domain 90 \[Homo sapiens \(human\) \]](#)

Official Symbol [WDR90](#)

Synonyms WDR90; WD repeat domain 90; POC16; C16orf15; C16orf16; C16orf17; C16orf18; C16orf19; WD repeat-containing protein 90

Gene ID [197335](#)

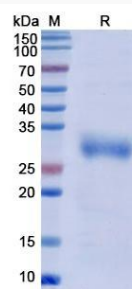
mRNA Refseq [NM_145294](#)

Protein Refseq [NP_660337](#)

MIM [618290](#)

UniProt ID [Q96KV7](#)

SDS-PAGE



 Tel: 1-631-559-9269 1-516-512-3133

 Email: info@creative-biomart.com  Fax: 1-631-938-8127

 45-1 Ramsey Road, Shirley, NY 11967, USA