

# Recombinant Full Length Human WDR91 Protein, C-Flag-tagged

**Cat. No.** WDR91-1728HFL    **Lot. No.** (See product label)

## SPECIFICATION

<b>Product Overview</b>	Recombinant Full Length Human WDR91 Protein, fused to Flag-tag at C-terminus, was expressed in Mammalian cells.
<b>Species</b>	Human
<b>Source</b>	Mammalian Cells
<b>Description</b>	Enables phosphatidylinositol 3-kinase regulator activity. Involved in early endosome to late endosome transport; regulation of cellular protein catabolic process; and regulation of phosphatidylinositol 3-kinase activity. Located in cytosol; early endosome membrane; and late endosome membrane. Is extrinsic component of endosome membrane.
<b>Form</b>	25 mM Tris HCl, pH 7.3, 100 mM glycine, 10% glycerol.
<b>Molecular Mass</b>	83.2 kDa
<b>AA Sequence</b>	MAEAVERTDELVREYLLFRGFTHLTRQLDAEIKADKEKGFRVDKIVDQLQQLMQVYD LAALRDYWSYLER RLFSRLEDIYRPTIHKLKTSLFRFYLVYTIQTNRNDKAQEFAKQ ATELQNQAEWKDWFVLPFLPSPDTN PTFATYFSRQWADTFIVSLHNFLSVLFQCMP VPVILNFDAECQRTNQVQEENEVLRQKLFALQAEIHRK KEEQQPEEEEEALVQHKL PYVSNMDRLGDSELAMVCSQRNASLSQSPRVGFLSSLLPQSKKSPSRLSPAQ GPP QPQSSAKKESFGGQGTKGKDPTSGAKDGKSLLSGLATGESGWSQHRQRRLQDHG KERKELFSTTTTSQ CAEKKPEASGPEAEPCELPHTPEVPLTRASSAGPEGGGV RPE

 Tel: 1-631-559-9269    1-516-512-3133

 Email: [info@creative-biomart.com](mailto:info@creative-biomart.com)     Fax: 1-631-938-8127

 45-1 Ramsey Road, Shirley, NY 11967, USA

QPFIVLGQEEYGEHHSSIMHCRVDCSG RRVASLDVDGVIKVWSFNPIMQTKASSISK  
 SPLLSLEWATKRDRLLLLGSGVGTVRLYDTEAKKNLCEIN INDNMPRILSLACSPNG  
 ASFVCSAAAPSLTSQVDFSAPDIGSKGMNQVPGRLLLWDTKTMKQQLQFSLDP EPI  
 AINCTAFNHNGNLLVTGAADGVIRLFDMMQHECAMSWRAHYGEVYSVEFSYDENTV  
 YSIGEDGKFIQ WNIHKSGLVSEYSLPSDATGPFVLSGYSYKQVQVPRGRLFAFD  
 SEGNYMLTCSATGGVIYKLGDEKV  
 LESCLSLGGHRAPVVTVDWSTAMDCGTCLTASMDGKIKLTLLAHKATRTRPLEQKL  
 ISEEDLAANDILDYKDDDDKV

<b>Purity</b>	> 80% as determined by SDS-PAGE and Coomassie blue staining.
<b>Stability</b>	Stable for 12 months from the date of receipt of the product under proper storage and handling conditions. Avoid repeated freeze-thaw cycles.
<b>Storage</b>	Store at -80 centigrade.
<b>Concentration</b>	>50 ug/mL as determined by microplate BCA method.
<b>Preparation</b>	Recombinant protein was captured through anti-DDK affinity column followed by conventional chromatography steps.
<b>Full Length</b>	Full L.

## GENE INFORMATION

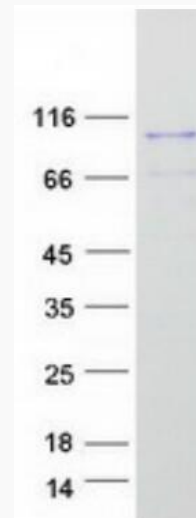
<b>Gene Name</b>	WDR91 WD repeat domain 91 [ Homo sapiens (human) ]
<b>Official Symbol</b>	WDR91
<b>Synonyms</b>	SORF1; SORF-1; HSPC049

 Tel: 1-631-559-9269 1-516-512-3133

 Email: [info@creative-biomart.com](mailto:info@creative-biomart.com)  Fax: 1-631-938-8127

 45-1 Ramsey Road, Shirley, NY 11967, USA

Gene ID	29062
mRNA Refseq	NM_014149.4
Protein Refseq	NP_054868.3
MIM	616303
UniProt ID	A4D1P6



Coomassie blue staining of purified WDR91 protein.

Tel: 1-631-559-9269 1-516-512-3133

Email: [info@creative-biomart.com](mailto:info@creative-biomart.com) Fax: 1-631-938-8127

45-1 Ramsey Road, Shirley, NY 11967, USA