

Recombinant Human WDR92 Protein, Myc/DDK-tagged, C13 and N15-labeled

Cat. No. WDR92-2079H **Lot. No.** (See product label)

SPECIFICATION

Product Overview	WDR92 MS Standard C13 and N15-labeled recombinant protein (NP_612467) with a C-terminal MYC/DDK tag, was expressed in HEK293 cells.
Species	Human
Source	HEK293
Description	This gene encodes a protein with two WD40 repeat domains thought to be involved in an apoptosis via activation of caspase-3. Multiple transcript variants encoding different isoforms have been found for this gene.
Molecular Mass	39.7 kDa
AA Sequence	MSAFEKPKQIIAHIQKGFNYTVFDCKWVPCSAKFVTMGNFARGTGVIQLYEIQHGDLK LLREIEKAKPIKCGTFGATSLQQRYLATGDFGGNLHIWNLEAPEMPVYSVKGHKEIIN AIDGIGGLGIGEGAPEIVTGSRDGTVKVWDPRQKDDPVANMEPVQGENKRDCWTV AFGNAYNQEERVVCAGYDNGDIKFLDLRNMALRWETNIKNGVCSLEFDRKDISMKNK LVATSLEGKFHVFDMRTQHPTKGFASVSEKAHKSTVWQVRHLPQNRELFRTAGGA GGLHLWKYEYPIQRSKKDSEGIEMGVAGSVSLLQNVTLSTQPISSLDWSPDKRGLC VCSSFDQTVRVLIVTKLNKITRTRPLEQKLISEEDLAANDILDYKDDDDKV
Purity	> 80% as determined by SDS-PAGE and Coomassie blue staining
Stability	Stable for 3 months from receipt of products under proper storage and handling

 Tel: 1-631-559-9269 1-516-512-3133

 Email: info@creative-biomart.com  Fax: 1-631-938-8127

 45-1 Ramsey Road, Shirley, NY 11967, USA

conditions.

Storage Store at -80 centigrade. Avoid repeated freeze-thaw cycles.

Concentration 50 µg/mL as determined by BCA

Storage Buffer 100 mM glycine, 25 mM Tris-HCl, pH 7.3.

GENE INFORMATION

Gene Name WDR92 WD repeat domain 92 [Homo sapiens (human)]

Official Symbol WDR92

Synonyms WDR92; WD repeat domain 92; WD repeat-containing protein 92; FLJ31741; Monad; monad; WD repeat-containing protein Monad;

Gene ID 116143

mRNA Refseq NM_138458

Protein Refseq NP_612467

MIM 610729

UniProt ID Q96MX6

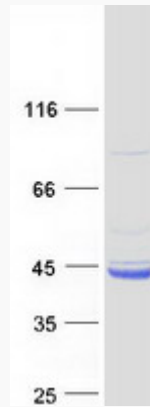
 Tel: 1-631-559-9269 1-516-512-3133

 Email: info@creative-biomart.com  Fax: 1-631-938-8127

 45-1 Ramsey Road, Shirley, NY 11967, USA



SDS-PAGE



Tel: 1-631-559-9269 1-516-512-3133

Email: info@creative-biomart.com Fax: 1-631-938-8127

45-1 Ramsey Road, Shirley, NY 11967, USA