

Recombinant Human WEE1 Protein, GST-tagged

Cat. No. WEE1-001H Lot. No. (See product label)

SPECIFICATION

Product Overview	Recombinant human WEE1 (247-end) was expressed by baculovirus in Sf9 insect cells using an N-terminal GST tag.
Species	Human
Source	Insect Cells
Protein Length	247-end a.a.
Description	This gene encodes a nuclear protein, which is a tyrosine kinase belonging to the Ser/Thr family of protein kinases. This protein catalyzes the inhibitory tyrosine phosphorylation of CDC2/cyclin B kinase, and appears to coordinate the transition between DNA replication and mitosis by protecting the nucleus from cytoplasmically activated CDC2 kinase.
Molecular Mass	115 kDa
Purity	> 70%
Stability	One year at -70 centigrade from date of shipment.
Storage	Store product at -70 centigrade. For optimal storage, aliquot target into smaller quantities after centrifugation and store at recommended temperature. For most favorable performance, avoid repeated handling and multiple freeze/thaw cycles.

 Tel: 1-631-559-9269 1-516-512-3133

 Email: info@creative-biomart.com  Fax: 1-631-938-8127

 45-1 Ramsey Road, Shirley, NY 11967, USA

Concentration	0.05 µg/µL
Storage Buffer	50 mM Tris-HCl, pH 7.5, 150 mM NaCl, 10 mM glutathione, 0.1 mM EDTA, 0.25 mM DTT, 0.1 mM PMSF, 25% glycerol.
Shipping	Dry ice.

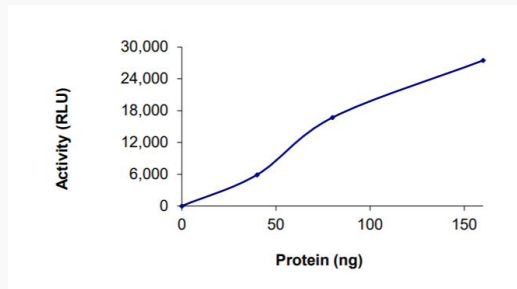
GENE INFORMATION

Gene Name	WEE1 WEE1 G2 checkpoint kinase [Homo sapiens (human)]
Official Symbol	WEE1
Synonyms	WEE1; WEE1 G2 checkpoint kinase; WEE1A; WEE1hu; wee1-like protein kinase; WEE1 homolog; WEE1+ homolog; wee1A kinase; EC 2.7.10.2
Gene ID	7465
mRNA Refseq	NM_003390
Protein Refseq	NP_003381
MIM	193525
UniProt ID	P30291

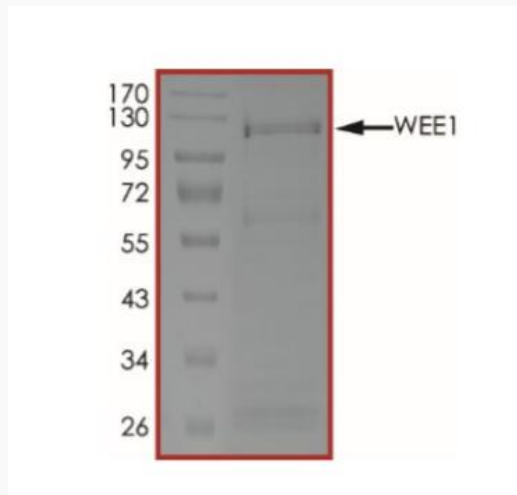
 Tel: 1-631-559-9269 1-516-512-3133

 Email: info@creative-biomart.com  Fax: 1-631-938-8127

 45-1 Ramsey Road, Shirley, NY 11967, USA

Activity

The specific activity of WEE1 was determined to be 0.7 nmol/min/mg as per activity assay protocol.

Purity

Tel: 1-631-559-9269 1-516-512-3133

Email: info@creative-biomart.com Fax: 1-631-938-8127

45-1 Ramsey Road, Shirley, NY 11967, USA