

Active Recombinant Full Length Human WEE1 Protein, N-GST-tagged

Cat. No. WEE1-12HFL Lot. No. (See product label)

SPECIFICATION

Product Overview	Recombinant full-length human WEE1 was expressed by baculovirus in Sf9 insect cells using an N-terminal GST tag.
Species	Human
Source	Sf9 Cells
Description	This gene encodes a nuclear protein, which is a tyrosine kinase belonging to the Ser/Thr family of protein kinases. This protein catalyzes the inhibitory tyrosine phosphorylation of CDC2/cyclin B kinase, and appears to coordinate the transition between DNA replication and mitosis by protecting the nucleus from cytoplasmically activated CDC2 kinase.
Form	Recombinant protein stored in 50mM Tris-HCl, pH 7.5, 150mM NaCl, 10mM glutathione, 0.1mM EDTA, 0.25mM DTT, 25% glycerol.
Bio-activity	0.7 nmol/min/mg
Molecular Mass	Predicted Molecular Mass: 101 kDa SDS-PAGE: 115 kDa, reducing conditions
Purity	>70%
Stability	lyr at -70 centigrade from date of shipment.

 Tel: 1-631-559-9269 1-516-512-3133

 Email: info@creative-biomart.com  Fax: 1-631-938-8127

 45-1 Ramsey Road, Shirley, NY 11967, USA

Storage

Store product at -70 centigrade. For optimal storage, aliquot target into smaller quantities after centrifugation and store at recommended temperature. For most favorable performance, avoid repeated handling and multiple freeze/thaw cycles.

Concentration

0.05 ug/ul

GENE INFORMATION

Gene Name

WEE1 WEE1 G2 checkpoint kinase [Homo sapiens (human)]

Official Symbol

WEE1

Synonyms

WEE1A; WEE1hu

Gene ID

7465

mRNA Refseq

NM_003390.4

Protein Refseq

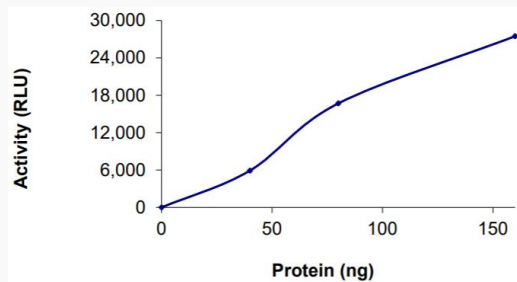
NP_003381.1

MIM

193525

UniProt ID

P30291

Specific Activity


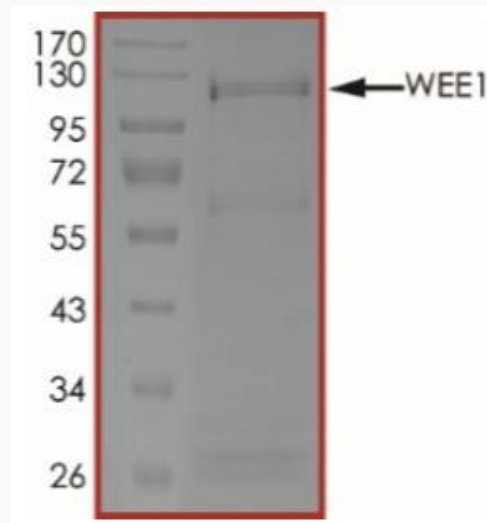
Tel: 1-631-559-9269 1-516-512-3133

Email: info@creative-biomart.com Fax: 1-631-938-8127

45-1 Ramsey Road, Shirley, NY 11967, USA

The specific activity of WEE1 was determined to be 0.7 nmol/min/mg

SDS-PAGE



The purity of WEE1 was determined to be >70% by densitometry.

 Tel: 1-631-559-9269 1-516-512-3133

 Email: info@creative-biomart.com  Fax: 1-631-938-8127

 45-1 Ramsey Road, Shirley, NY 11967, USA