

## Active Recombinant Human WEE1 Protein (Q36-Y432), N-GST-6xHis tagged

Cat. No. WEE1-15H Lot. No. (See product label)

### SPECIFICATION

<b>Product Overview</b>	Human WEE1, C-terminal fragment, amino acids Q36-Y432 (as in NCBI/Protein entry NP_001137448.1), N-terminal GST-6xHis fusion protein with a Thrombin cleavage site, expressed in Sf9 insect cells
<b>Species</b>	Human
<b>Source</b>	Insect Cells
<b>ProteinLength</b>	Q36-Y432
<b>Description</b>	This gene encodes a nuclear protein, which is a tyrosine kinase belonging to the Ser/Thr family of protein kinases. This protein catalyzes the inhibitory tyrosine phosphorylation of CDC2/cyclin B kinase, and appears to coordinate the transition between DNA replication and mitosis by protecting the nucleus from cytoplasmically activated CDC2 kinase.
<b>Bio-activity</b>	Specific kinase activity (Pi transfer): 2 pmol/μg × min ATP-KM: 1.6 μM
<b>Molecular Mass</b>	74,902 Da
<b>Storage</b>	At -80 centigrade For complete recovery, mix well and spin before use. Product must not be stored in diluted solutions, aliquots below 10

 Tel: 1-631-559-9269 1-516-512-3133

 Email: [info@creative-biomart.com](mailto:info@creative-biomart.com)  Fax: 1-631-938-8127

 45-1 Ramsey Road, Shirley, NY 11967, USA

μL are not advisable. Avoid repeated freeze-thaw cycles!

**Concentration** 0.142 μg/μL (Bradford method using BSA as standard protein)

**Storage Buffer** 50 mM TRIS-HCl pH 8.0, 100 mM NaCl, 5 mM DTT, 4 mM reduced glutathione, 20 % glycerol

## GENE INFORMATION

**Gene Name** [WEE1](#) [WEE1](#) [G2 checkpoint kinase \[ Homo sapiens \(human\) \]](#)

**Official Symbol** [WEE1](#)

**Synonyms** [WEE1](#); [WEE1 G2 checkpoint kinase](#); [WEE1A](#); [WEE1hu](#); [wee1-like protein kinase](#); [WEE1 homolog](#); [WEE1+ homolog](#); [protein kinase](#); [wee1A kinase](#); [EC 2.7.10.2](#)

**Gene ID** [7465](#)

**mRNA Refseq** [NM\\_001143976](#)

**Protein Refseq** [NP\\_001137448](#)

**MIM** [193525](#)

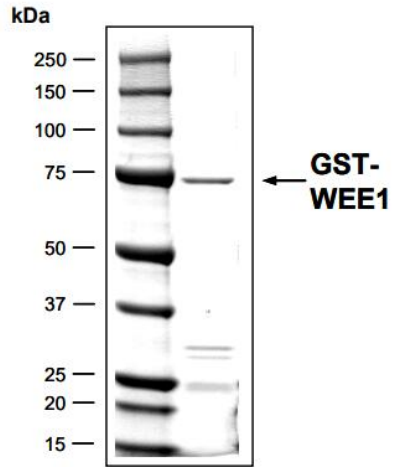
**UniProt ID** [P30291](#)

 Tel: 1-631-559-9269 1-516-512-3133

 Email: [info@creative-biomart.com](mailto:info@creative-biomart.com)  Fax: 1-631-938-8127

 45-1 Ramsey Road, Shirley, NY 11967, USA

SDS-PAGE



 Tel: 1-631-559-9269 1-516-512-3133

 Email: [info@creative-biomart.com](mailto:info@creative-biomart.com)  Fax: 1-631-938-8127

 45-1 Ramsey Road, Shirley, NY 11967, USA