

## Recombinant Human WEE1 protein(1-646aa), His-tagged

Cat. No. WEE1-376H Lot. No. (See product label)

### SPECIFICATION

|                         |                                                                                                                                                                                                                                                                                                                    |
|-------------------------|--------------------------------------------------------------------------------------------------------------------------------------------------------------------------------------------------------------------------------------------------------------------------------------------------------------------|
| <b>Product Overview</b> | Recombinant Human WEE1 protein(P30291)(1-646aa), fused with N-terminal His tag, was expressed in E.coli.                                                                                                                                                                                                           |
| <b>Species</b>          | Human                                                                                                                                                                                                                                                                                                              |
| <b>Source</b>           | E.coli                                                                                                                                                                                                                                                                                                             |
| <b>ProteinLength</b>    | 1-646aa                                                                                                                                                                                                                                                                                                            |
| <b>Form</b>             | If the delivery form is liquid, the default storage buffer is Tris/PBS-based buffer, 5%-50% glycerol. If the delivery form is lyophilized powder, the buffer before lyophilization is Tris/PBS-based buffer, 6% Trehalose, pH 8.0.                                                                                 |
| <b>Molecular Mass</b>   | 77.6 kDa                                                                                                                                                                                                                                                                                                           |
| <b>Purity</b>           | Greater than 85% as determined by SDS-PAGE.                                                                                                                                                                                                                                                                        |
| <b>Storage</b>          | Store at -20°C/-80°C upon receipt, aliquoting is necessary for mutiple use. Avoid repeated freeze-thaw cycles.                                                                                                                                                                                                     |
| <b>Reconstitution</b>   | We recommend that this vial be briefly centrifuged prior to opening to bring the contents to the bottom. Please reconstitute protein in deionized sterile water to a concentration of 0.1-1.0 mg/mL. We recommend to add 5-50% of glycerol (final concentration) and aliquot for long-term storage at -20°C/-80°C. |

 Tel: 1-631-559-9269 1-516-512-3133

 Email: [info@creative-biomart.com](mailto:info@creative-biomart.com)  Fax: 1-631-938-8127

 45-1 Ramsey Road, Shirley, NY 11967, USA

**AA Sequence**

```

MSFLSRQQPPPPRRAGAACTLRQKLIFSPCSDCEEEEEEEEEEGSGHSTGEDSAFQ
EPDSPLPPARSPTEPGPERRRSPGPAPGSPGELEEDLLLPGACPGADEAGGGAEG
DSWEEEGFGSSSPVKSPAAPYFLGSSFSPVRCGGPGDASPRGCGARRAGEGRRS
PRPDHPGTPPHKTRFRKLRLFDTPHTPKSLLSKARGIDSSSVKLRGSSLFMDTEKSGK
REFDVRQTPQVNINPFTPDSLLLHSSGQCRRRKRTYWNDSCGEDMEASDYELEDE
TRPAKRITITESNMKSRYTTEFHELEKIGSGEFGSVFKCVKRLDGCYAIKRSKKPLAG
SVDEQNALREVYAHAVLGQHSHVVRYSAWAEDDHMLIQNEYCNGGSLADAISENY
RIMSYFKEAELKDLLLQVGRGLRYIHSM SLVHMDIKPSNIFISRTSIPNAASEEGDEDD
WASNKVMFKIGDLGHVTRISSPQVEEGDSRFLANEVLQENYTHLPKADIFALALTVV
CAAGAEPLPRNGDQWHEIRQGRLPRIPQVLSQEFTELLKVMIHDPERRPSAMALV
KHSVLLSASRKS AEQLRIELNAEKFKNSLLQKELKKAQMAKAAAEERALFTDRMATR
STTQSNRTSRLIGKKMNRSVSLTIY
    
```

**GENE INFORMATION**

**Gene Name** [WEE1 WEE1 homolog \(S. pombe\) \[ Homo sapiens \]](#)

**Official Symbol** [WEE1](#)

**Synonyms** WEE1; WEE1 homolog (S. pombe); wee1+ (S. pombe) homolog; wee1-like protein kinase; wee1A kinase; WEE1+ homolog; WEE1A; WEE1hu; FLJ16446; DKFZp686I18166;

**Gene ID** [7465](#)

**mRNA Refseq** [NM\\_001143976](#)

**Protein Refseq** [NP\\_001137448](#)

**MIM** [193525](#)

 Tel: 1-631-559-9269 1-516-512-3133

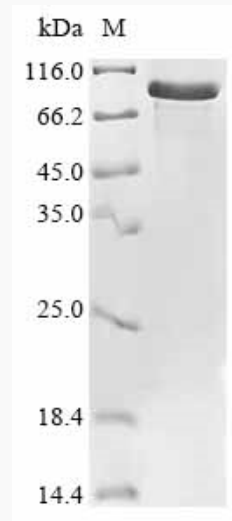
 Email: [info@creative-biomart.com](mailto:info@creative-biomart.com)  Fax: 1-631-938-8127

 45-1 Ramsey Road, Shirley, NY 11967, USA

UniProt ID

P30291

SDS-PAGE



 Tel: 1-631-559-9269 1-516-512-3133

 Email: [info@creative-biomart.com](mailto:info@creative-biomart.com)  Fax: 1-631-938-8127

 45-1 Ramsey Road, Shirley, NY 11967, USA