

# Recombinant Human WEE1 Protein, Myc/DDK-tagged, C13 and N15-labeled

Cat. No. WEE1-6052H Lot. No. (See product label)

## SPECIFICATION

### Product Overview

WEE1 MS Standard C13 and N15-labeled recombinant protein (NP\_003381) with a C-terminal MYC/DDK tag, was expressed in HEK293 cells.

### Species

Human

### Source

HEK293

### Description

This gene encodes a nuclear protein, which is a tyrosine kinase belonging to the Ser/Thr family of protein kinases. This protein catalyzes the inhibitory tyrosine phosphorylation of CDC2/cyclin B kinase, and appears to coordinate the transition between DNA replication and mitosis by protecting the nucleus from cytoplasmically activated CDC2 kinase.

### Molecular Mass

71.4 kDa

### AA Sequence

MSFLSRQQPPPPRRAGAACTLRQKLIFSPCSDCEEEEEEEEEEGSGHSTGEDSAFQ  
 EPDSPLPPARSPTEPGPERRRSPGPAPGSPGELEEDLLLPGACPGADEAGGGAEG  
 DSWEEEFGSSSPVKSPAAPYFLGSSSFSPVRCGGPGDASPRGCGARRAGEGRRS  
 PRPDHPGTPPHKTFRKLRLFDTPHTPKSLLSKARGIDSSSVKLRGSSLFMDTEKSGK  
 REFQVLRQTPQVNINPFTPDLSLLHSSGQCRRRKRTYWNDSGEGMEASDYELEDE  
 TRPAKRITITESNMKSRYTTEFHELEKIGSGEFGSVFKCVKRLDGCYAIKRSKKPLAG  
 SVDEQNALREVYAHAVLGQSHVVRYSAWAEDDHMLIQNEYRNGGSLADAISENY  
 RIMSYFKEAELKDLLLQVGRGLRYIHSMVHMDIKPSNIFISRTSIPNAASEEGDEDD

 Tel: 1-631-559-9269 1-516-512-3133

 Email: [info@creative-biomart.com](mailto:info@creative-biomart.com)  Fax: 1-631-938-8127

 45-1 Ramsey Road, Shirley, NY 11967, USA

WASNKVMFKIGDLGHVTRISSPQVEEGDSRFLANEVLQENYTHLPKADIFALALTVV  
 CAAGAEPLPRNGDQWHEIRQGRLPRIQVLSQEFTELLKVMIHDPERRPSAMALV  
 KHSVLLSASRKSAEQLRIELNAEKFKNSLLQKELKKAQMAKAAAEERALFTDRMATR  
 STTQSNRTSRLIGKKMNRSVSLTIYTRTRPLEQKLISEEDLAANDILDYKDDDDKV

**Purity** > 80% as determined by SDS-PAGE and Coomassie blue staining

**Stability** Stable for 3 months from receipt of products under proper storage and handling conditions.

**Storage** Store at -80 centigrade. Avoid repeated freeze-thaw cycles.

**Concentration** 50 µg/mL as determined by BCA

**Storage Buffer** 100 mM glycine, 25 mM Tris-HCl, pH 7.3.

## GENE INFORMATION

**Gene Name** [WEE1](#) [WEE1 G2 checkpoint kinase \[ Homo sapiens \(human\) \]](#)

**Official Symbol** [WEE1](#)

**Synonyms** WEE1; WEE1 homolog (S. pombe); wee1+ (S. pombe) homolog; wee1-like protein kinase; wee1A kinase; WEE1+ homolog; WEE1A; WEE1hu; FLJ16446; DKFZp686I18166;

**Gene ID** [7465](#)

**mRNA Refseq** [NM\\_003390](#)

**Protein Refseq** [NP\\_003381](#)

 Tel: 1-631-559-9269 1-516-512-3133

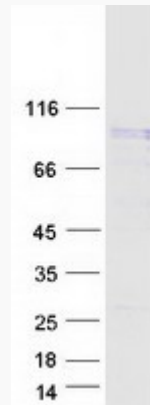
 Email: [info@creative-biomart.com](mailto:info@creative-biomart.com)  Fax: 1-631-938-8127

 45-1 Ramsey Road, Shirley, NY 11967, USA

**MIM** 193525

**UniProt ID** P30291

**SDS-PAGE**



 Tel: 1-631-559-9269 1-516-512-3133

 Email: [info@creative-biomart.com](mailto:info@creative-biomart.com)  Fax: 1-631-938-8127

 45-1 Ramsey Road, Shirley, NY 11967, USA