

Recombinant Human WEE2 Protein, Myc/DDK-tagged, C13 and N15-labeled

Cat. No. WEE2-2594H **Lot. No.** (See product label)

SPECIFICATION

Product Overview	WEE2 MS Standard C13 and N15-labeled recombinant protein (NP_001099028) with a C-terminal MYC/DDK tag, was expressed in HEK293 cells.
Species	Human
Source	HEK293
Description	Oocyte-specific protein tyrosine kinase that phosphorylates and inhibits CDK1/CDC2 and acts as a key regulator of meiosis during both prophase I and metaphase II. Required to maintain meiotic arrest in oocytes during the germinal vesicle (GV) stage, a long period of quiescence at dictyate prophase I, by phosphorylating CDK1 at 'Tyr-15', leading to inhibit CDK1 activity and prevent meiotic reentry. Also required for metaphase II exit during egg activation by phosphorylating CDK1 at 'Tyr-15', to ensure exit from meiosis in oocytes and promote pronuclear formation.
Molecular Mass	62.7 kDa
AA Sequence	MDDKDIDKELRQKLNFSYCEETEIEGQKKVEESREASSQTPEKGEVQDSEAKGTPP WTPLSNVHELDTSSEKDKESPDQILRTPVSHPLKCPETPAQPDSRSKLLPSDSPSTP KTMLSRVISPTGKLP SRGPKHLKLT PAPLKDEMTSLALVNINPFTPESYKKLFLQSG GKRKIRGDLEEAGPEEGKGG LPAKRCVLR ETN MASRYEKEFLEVEKIGVGEFGTVY KCIKRLDGCVYAIKRSMKTFTELSNENSALHEVYAHAVLGHHPHVRYRYSSWAEDD HMIIQNEYCNGGSLQAAISENTKSGNHFE EPKLKDILLQISLGLNYIHNSSMVHLDIKP

 Tel: 1-631-559-9269 1-516-512-3133

 Email: info@creative-biomart.com  Fax: 1-631-938-8127

 45-1 Ramsey Road, Shirley, NY 11967, USA

SNIFICHKMQSESSGVIEEVENEADWFLSANVMYKIGDLGHATSINKPKVEEGDSRFL
 ANEILQEDYRHLPKADIFALGLTIAVAAGAESLPTNGAAWHHIRKGNFPDVPQELSES
 FSSLLKNMIQPDAEQRPSSAAALARNTVLRPSLGKTEELQQQLNLEKFKTATLERELR
 EAQQAQSPQGYTHHGDTGVSHTGSRSTKRLVGGKSARSSSFTSGEREPLHTRT
 RPLEQKLISEEDLAANDILDYKDDDDKV

Purity > 80% as determined by SDS-PAGE and Coomassie blue staining

Stability Stable for 3 months from receipt of products under proper storage and handling conditions.

Storage Store at -80 centigrade. Avoid repeated freeze-thaw cycles.

Concentration 50 µg/mL as determined by BCA

Storage Buffer 100 mM glycine, 25 mM Tris-HCl, pH 7.3.

GENE INFORMATION

Gene Name WEE2 WEE2 oocyte meiosis inhibiting kinase [Homo sapiens (human)]

Official Symbol WEE2

Synonyms WEE2; WEE2 oocyte meiosis inhibiting kinase; OOMD5; WEE1B; wee1-like protein kinase 2; WEE1 homolog 2; wee1-like protein kinase 1B; wee1B kinase; EC 2.7.10.2

Gene ID 494551

mRNA Refseq NM_001105558

Protein Refseq NP_001099028

 Tel: 1-631-559-9269 1-516-512-3133

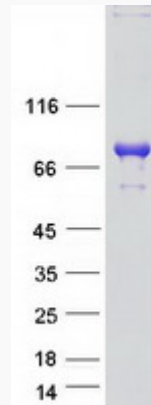
 Email: info@creative-biomart.com  Fax: 1-631-938-8127

 45-1 Ramsey Road, Shirley, NY 11967, USA

MIM 614084

UniProt ID P0C1S8

SDS-PAGE



 Tel: 1-631-559-9269 1-516-512-3133

 Email: info@creative-biomart.com  Fax: 1-631-938-8127

 45-1 Ramsey Road, Shirley, NY 11967, USA