

Recombinant Active Human WEE2 Protein (Full length), N-GST-tagged

Cat. No. WEE2-41H Lot. No. (See product label)

SPECIFICATION

Product Overview	Recombinant full-length human WEE2 was expressed by baculovirus in Sf9 insect cells using an N-terminal GST tag.
Species	Human
Source	Sf9 Cells
ProteinLength	Full Length
Description	WEE2, also known as WEE1B, is a dual-specificity kinases that uniquely function to phosphorylate specific Tyr/Thr residues on CDKs. It belongs to WEE1 family that also includes WEE1 homolog 1 (WEE1, also designated as somatic WEE1A) and PKMYT1 (previously known as MYT1). It is conserved from yeast to humans and has been shown to suppress CDK1 activity by phosphorylating its inhibitory sites. A key M phase-promoting factor (MPF) inhibitory kinase in oocytes and is required for maintaining meiotic arrest.
Bio-activity	The specific activity of WEE2 was determined to be 5.5 nmol/min/mg as per activity assay protocol.
Purity	The purity of WEE2 was determined to be > 90 % by densitometry.
Stability	One year at -70 centigrade from date of shipment.

 Tel: 1-631-559-9269 1-516-512-3133

 Email: info@creative-biomart.com  Fax: 1-631-938-8127

 45-1 Ramsey Road, Shirley, NY 11967, USA

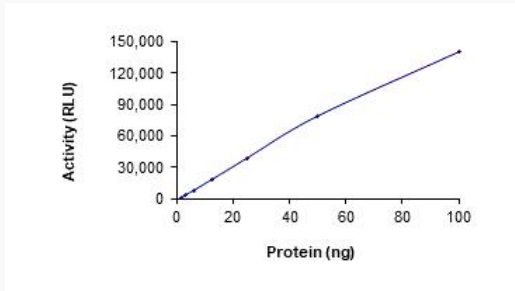


Storage	Store product at -70 centigrade. For optimal storage, aliquot target into smaller quantities after centrifugation and store at recommended temperature. For most favorable performance, avoid repeated handling and multiple freeze/thaw cycles.
Concentration	0.1 µg/µL
Storage Buffer	Recombinant protein stored in 50mM Tris-HCl, pH 7.5, 150mM NaCl, 10mM glutathione, 0.1mM EDTA, 0.25mM DTT, 25% glycerol.
Shipping	Dry ice

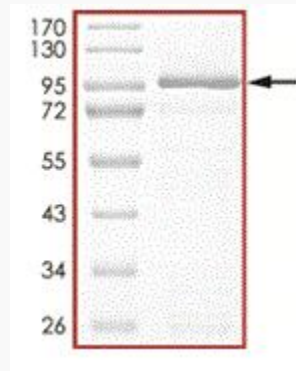
GENE INFORMATION

Gene Name	WEE2 WEE1 homolog 2 (S. pombe) [Homo sapiens (human)]
Official Symbol	WEE2
Synonyms	WEE2; WEE2 oocyte meiosis inhibiting kinase; OOMD5; WEE1B; wee1-like protein kinase 2; WEE1 homolog 2; wee1-like protein kinase 1B; wee1B kinase; EC 2.7.10.2
Gene ID	494551
mRNA Refseq	NM_001105558
Protein Refseq	NP_001099028
MIM	614084
UniProt ID	P0C1S8

Activity



Purity



 Tel: 1-631-559-9269 1-516-512-3133

 Email: info@creative-biomart.com  Fax: 1-631-938-8127

 45-1 Ramsey Road, Shirley, NY 11967, USA