

Recombinant Cynomolgus WFDC1 protein, His-tagged

Cat. No. WFDC1-1631C Lot. No. (See product label)

SPECIFICATION

Product Overview	Recombinant Cynomolgus WFDC1 protein(XP_015298715.2)(Lys32-Gln192), fused with N-terminal His tag, was expressed in E.coli.
Species	Cynomolgus
Source	N-His
ProteinLength	Lys32-Gln192
Tag	N-His
Form	Supplied as 0.22µm filtered solution in 20mM PB, 500mM NaCl (pH 7.4).
Bio-activity	
Molecular Mass	The protein has a predicted MW of 18.77 kDa. The protein migrates to 25-28 kDa based on Tris-Bis PAGE result.
Endotoxin	Less than 1EU per µg by the LAL method.
Purity	> 95% as determined by Tris-Bis PAGE.
Storage	Valid for 12 months from date of receipt when stored at -80°C.;Recommend to aliquot the protein into smaller quantities for optimal storage. Please do not repeated freeze-thaw cycles.

 Tel: 1-631-559-9269 1-516-512-3133

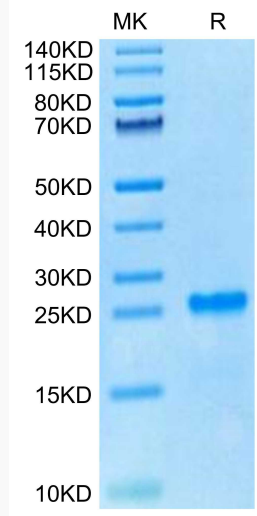
 Email: info@creative-biomart.com  Fax: 1-631-938-8127

 45-1 Ramsey Road, Shirley, NY 11967, USA

Reconstitution

It is recommended that sterile water be added to the vial to prepare a stock solution of 0.2 ug/ul. Centrifuge the vial at 4°C before opening to recover the entire contents.

Tris-Bis PAGE



 Tel: 1-631-559-9269 1-516-512-3133

 Email: info@creative-biomart.com  Fax: 1-631-938-8127

 45-1 Ramsey Road, Shirley, NY 11967, USA