

# Recombinant Human WFDC1 Protein, Myc/DDK-tagged, C13 and N15-labeled

**Cat. No.** WFDC1-4413H    **Lot. No.** (See product label)

## SPECIFICATION

<b>Product Overview</b>	WFDC1 MS Standard C13 and N15-labeled recombinant protein (NP_067020) with a C-terminal MYC/DDK tag, was expressed in HEK293 cells.
<b>Species</b>	Human
<b>Source</b>	HEK293
<b>Description</b>	This gene encodes a member of the WAP-type four disulfide core domain family. The WAP-type four-disulfide core domain contains eight cysteines forming four disulfide bonds at the core of the protein, and functions as a protease inhibitor in many family members. This gene is mapped to chromosome 16q24, an area of frequent loss of heterozygosity in cancers, including prostate, breast and hepatocellular cancers and Wilms' tumor. This gene is downregulated in many cancer types and may be involved in the inhibition of cell proliferation. The encoded protein may also play a role in the susceptibility of certain CD4 memory T cells to human immunodeficiency virus infection. Alternative splicing results in multiple transcript variants.
<b>Molecular Mass</b>	20.6 kDa
<b>AA Sequence</b>	MPLTGVGPGSCRRQIIRALCLLLLLHAGSAKNIWKRALPARLAEKSRAEEAGAPGG PRQPRADRCPPPPRTLPPGACQAARCQADSECPRHRRCCYNGCAYACLEAVPPP PVLDWLVQPKPRWLGGNGWLLDGPEEVLQAEACSTTEDGAPELLCPSGYECHILS PGDVAEGIPNRGQCQRRQADGRILRHKLYKEYPEGDSKNVAEPGRGQQKHFQT

 Tel: 1-631-559-9269    1-516-512-3133

 Email: [info@creative-biomart.com](mailto:info@creative-biomart.com)     Fax: 1-631-938-8127

 45-1 Ramsey Road, Shirley, NY 11967, USA

RTRPLEQKLISEEDLAANDILDYKDDDDKV

**Purity** > 80% as determined by SDS-PAGE and Coomassie blue staining

**Stability** Stable for 3 months from receipt of products under proper storage and handling conditions.

**Storage** Store at -80 centigrade. Avoid repeated freeze-thaw cycles.

**Concentration** 50 µg/mL as determined by BCA

**Storage Buffer** 100 mM glycine, 25 mM Tris-HCl, pH 7.3.

## GENE INFORMATION

**Gene Name** [WFDC1 WAP four-disulfide core domain 1 \[ Homo sapiens \(human\) \]](#)

**Official Symbol** [WFDC1](#)

**Synonyms** WFDC1; WAP four-disulfide core domain 1; WAP four-disulfide core domain protein 1; PS20; ps20 growth inhibitor; prostate stromal protein ps20; WAP four-disulfide core domain 1 homolog;

**Gene ID** [58189](#)

**mRNA Refseq** [NM\\_021197](#)

**Protein Refseq** [NP\\_067020](#)

**MIM** [605322](#)

 Tel: 1-631-559-9269 1-516-512-3133

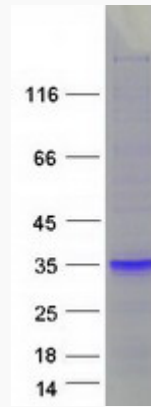
 Email: [info@creative-biomart.com](mailto:info@creative-biomart.com)  Fax: 1-631-938-8127

 45-1 Ramsey Road, Shirley, NY 11967, USA

UniProt ID

Q9HC57

SDS-PAGE



 Tel: 1-631-559-9269 1-516-512-3133

 Email: [info@creative-biomart.com](mailto:info@creative-biomart.com)  Fax: 1-631-938-8127

 45-1 Ramsey Road, Shirley, NY 11967, USA