

Recombinant Human WFDC2 protein, His-tagged

Cat. No. WFDC2-159H Lot. No. (See product label)

SPECIFICATION

Product Overview	Recombinant Human WFDC2 (Glu31-Phe124) protein was fused to His-tag at C-terminus and expressed in human 293 cells (HEK293).
Species	Human
Source	HEK293
ProteinLength	Glu31-Phe124
Description	<p>Human Epididymis Protein 4 (HE4) is also known as WAP four-disulfide core domain protein 2 (WFDC2), Epididymal secretory protein E4, Major epididymis-specific protein E4, Putative protease inhibitor WAP5, is a member of the WFDC domain family. HE4/WFDC2 is expressed in pulmonary epithelial cells, and was also found to be expressed in some ovarian cancers. The WFDC domain, or WAP Signature motif, contains eight cysteines forming four disulfide bonds at the core of the protein, and functions as a protease inhibitor in many family members. HE4 is also a small secretory protein, which may be involved in sperm maturation.</p>
Predicted N Terminal	Glu31
Form	Lyophilized from 0.22 µm filtered solution in PBS, pH7.4, 10% trehalose.
Molecular Mass	The protein has a calculated MW of 10.9 kDa. The protein migrates as 19 kDa and 22-26 kDa under reducing (R) condition (SDS-PAGE) due to different glycosylation.

 Tel: 1-631-559-9269 1-516-512-3133

 Email: info@creative-biomart.com  Fax: 1-631-938-8127

 45-1 Ramsey Road, Shirley, NY 11967, USA

Endotoxin	Less than 1.0 EU per µg by the LAL method.
Purity	>95% as determined by SDS-PAGE.
Storage	<p>For long term storage, the product should be stored at lyophilized state at -20 centigrade or lower.</p> <p>Please avoid repeated freeze-thaw cycles.</p> <p>This product is stable after storage at:</p> <p>-20 to -70 centigrade for 12 months in lyophilized state; -70 centigrade for 3 months under sterile conditions after reconstitution.</p>
Reconstitution	It is recommended that sterile water be added to the vial to prepare a stock solution of 0.2 ug/ul. Centrifuge the vial at 4°C before opening to recover the entire contents.

GENE INFORMATION

Gene Name	WFDC2
Official Symbol	WFDC2
Synonyms	WFDC2; WAP four-disulfide core domain 2; WAP four-disulfide core domain protein 2; dJ461P17.6; EDDM4; epididymal protein 4; HE4; WAP5; epididymal secretory protein E4; putative protease inhibitor WAP5; WAP domain containing protein HE4-V4; major epididymis-specific protein E4; epididymis-specific, whey-acidic protein type, four-disulfide core; MGC57529
Gene ID	10406
mRNA Refseq	NM_006103
Protein Refseq	NP_006094

 Tel: 1-631-559-9269 1-516-512-3133

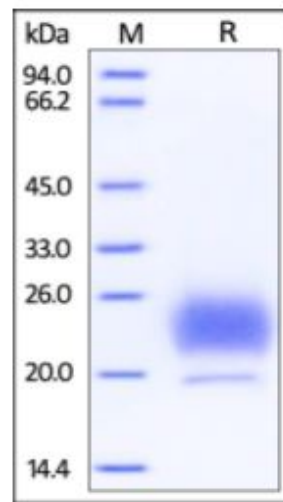
 Email: info@creative-biomart.com  Fax: 1-631-938-8127

 45-1 Ramsey Road, Shirley, NY 11967, USA

MIM 617548

UniProt ID Q14508

**SDS-PAGE of
WFDC2-159H**



Human HE4, His Tag on SDS-PAGE under reducing (R) condition. The gel was stained overnight with Coomassie Blue. The purity of the protein is greater than 95%.

Tel: 1-631-559-9269 1-516-512-3133

Email: info@creative-biomart.com Fax: 1-631-938-8127

45-1 Ramsey Road, Shirley, NY 11967, USA