

Recombinant Human WFDC2 Protein (Met1-Phe124), C-His tagged

Cat. No. WFDC2-3415H Lot. No. (See product label)

SPECIFICATION

Product Overview	Recombinant human WFDC2 (Met1-Phe124) protein fused with the C-terminal His tag was expressed in Mammalian cells.
Species	Human
Source	Mammalian Cells
ProteinLength	Met1-Phe124
Description	This gene encodes a protein that is a member of the WFDC domain family. The WFDC domain, or WAP Signature motif, contains eight cysteines forming four disulfide bonds at the core of the protein, and functions as a protease inhibitor in many family members. This gene is expressed in pulmonary epithelial cells, and was also found to be expressed in some ovarian cancers. The encoded protein is a small secretory protein, which may be involved in sperm maturation.
Molecular Mass	13.96 kDa
Purity	>90 % as determined by SDS-PAGE.
Notes	For research use only.
Storage	Use a manual defrost freezer and avoid repeated freeze thaw cycles. Store at 2 to 8 centigrade for one week. Store at -20 to -80 centigrade for twelve months from the

 Tel: 1-631-559-9269 1-516-512-3133

 Email: info@creative-biomart.com  Fax: 1-631-938-8127

 45-1 Ramsey Road, Shirley, NY 11967, USA

	date of receipt.
Storage Buffer	Supplied as solution form in PBS, pH 7.5 or lyophilized from PBS, pH 7.5.
Reconstitution	Reconstitute in sterile water for a stock solution.
Shipping	In general, proteins are provided as lyophilized powder/frozen liquid. They are shipped out with dry ice/blue ice unless customers require otherwise.

GENE INFORMATION

Gene Name	WFDC2 WAP four-disulfide core domain 2 [Homo sapiens (human)]
Official Symbol	WFDC2
Synonyms	WFDC2; WAP four-disulfide core domain 2; WAP four-disulfide core domain protein 2; dJ461P17.6; EDDM4; epididymal protein 4; HE4; WAP5; epididymal secretory protein E4; putative protease inhibitor WAP5; WAP domain containing protein HE4-V4; major epididymis-specific protein E4; epididymis-specific, whey-acidic protein type, four-disulfide core; MGC57529;
Gene ID	10406
mRNA Refseq	NM_006103
Protein Refseq	NP_006094
MIM	617548
UniProt ID	Q14508

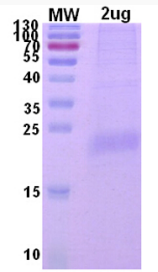
 Tel: 1-631-559-9269 1-516-512-3133

 Email: info@creative-biomart.com  Fax: 1-631-938-8127

 45-1 Ramsey Road, Shirley, NY 11967, USA



SDS-PAGE



SDS-PAGE Image

Tel: 1-631-559-9269 1-516-512-3133

Email: info@creative-biomart.com Fax: 1-631-938-8127

45-1 Ramsey Road, Shirley, NY 11967, USA