

Recombinant Human WFDC2 Protein (Glu31-Phe124), N-His tagged

Cat. No. WFDC2-5532H Lot. No. (See product label)

SPECIFICATION

Product Overview	Recombinant human WFDC2 (Glu31-Phe124) fused with the N-His tag was expressed in E. coli.
Species	Human
Source	E.coli
ProteinLength	Glu31-Phe124
Form	Lyophilized powder/frozen liquid
Molecular Mass	12.35 kDa
Purity	> 90 % as determined by SDS-PAGE
Notes	For research use only.
Storage	Use a manual defrost freezer and avoid repeated freeze thaw cycles. Store at 2 to 8 centigrade for one week. Store at -20 to -80 centigrade for twelve months from the date of receipt.
Storage Buffer	0.01M PBS, pH 7.4, 0.02 % NLS
Reconstitution	Reconstitute in sterile water for a stock solution.

 Tel: 1-631-559-9269 1-516-512-3133

 Email: info@creative-biomart.com  Fax: 1-631-938-8127

 45-1 Ramsey Road, Shirley, NY 11967, USA

Shipping

They are shipped out with dry ice/blue ice unless customers require otherwise.

GENE INFORMATION
Gene Name

WFDC2 WAP four-disulfide core domain 2 [Homo sapiens (human)]

Official Symbol

WFDC2

Synonyms

WFDC2; WAP four-disulfide core domain 2; WAP four-disulfide core domain protein 2; dJ461P17.6; EDDM4; epididymal protein 4; HE4; WAP5; epididymal secretory protein E4; putative protease inhibitor WAP5; WAP domain containing protein HE4-V4; major epididymis-specific protein E4; epididymis-specific, whey-acidic protein type, four-disulfide core; MGC57529;

Gene ID

10406

mRNA Refseq

NM_006103

Protein Refseq

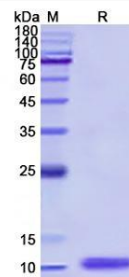
NP_006094

MIM

617548

UniProt ID

Q14508

SDS-PAGE


Tel: 1-631-559-9269 1-516-512-3133

Email: info@creative-biomart.com Fax: 1-631-938-8127

45-1 Ramsey Road, Shirley, NY 11967, USA