

Recombinant Human WFDC2 protein, His-tagged

Cat. No. WFDC2-6114H **Lot. No.** (See product label)

SPECIFICATION

Product Overview	Recombinant Human WFDC2 protein(21-124 aa), fused with N-terminal His tag, was expressed in E.coli.
Species	Human
Source	E.coli
ProteinLength	21-124 aa
Form	The purified protein was lyophilized from sterile phosphate-buffered saline (PBS: 58 mM Na ₂ HPO ₄ , 17 mM NaH ₂ PO ₄ , 68 mM NaCl, pH 7.4). Prior to lyophilization, 5% (w/v) trehalose and 5% (w/v) mannitol were incorporated as cryoprotective excipients.
AASequence	GFTLVSGTGAEKTGVCPQLQADQNCTQECVSDSECADNLKCCSAGCATFCSLPND KEGSCPQVNINFPQLGLCRDQCQVDSQCPGQMKCCRNGCGKVSCVTPNF
Purity	90%, by SDS-PAGE with Coomassie Brilliant Blue staining.
Storage	Store at 2-8°C for 1-2 weeks. Aliquot and store at -20°C to -80°C for up to 3 months, reconstitution with sterile water and addition of an equal volume of glycerol. Avoid repeat freeze-thaw cycles.
Reconstitution	Dissolve the product in 200 µl sterile water to achieve a working concentration of 0.25 g/

 Tel: 1-631-559-9269 1-516-512-3133

 Email: info@creative-biomart.com  Fax: 1-631-938-8127

 45-1 Ramsey Road, Shirley, NY 11967, USA

µl. If experimental compatibility allows, mix the aqueous solution with an equal volume of glycerol (1:1 ratio) after initial reconstitution.

GENE INFORMATION

Gene Name	WFDC2 WAP four-disulfide core domain 2 [Homo sapiens]
Official Symbol	WFDC2
Synonyms	WFDC2; WAP four-disulfide core domain 2; WAP four-disulfide core domain protein 2; dJ461P17.6; EDDM4; epididymal protein 4; HE4; WAP5; epididymal secretory protein E4; putative protease inhibitor WAP5; WAP domain containing protein HE4-V4; major epididymis-specific protein E4; epididymis-specific, whey-acidic protein type, four-disulfide core; MGC57529;
Gene ID	10406
mRNA Refseq	NM_006103
Protein Refseq	NP_006094
UniProt ID	Q14508

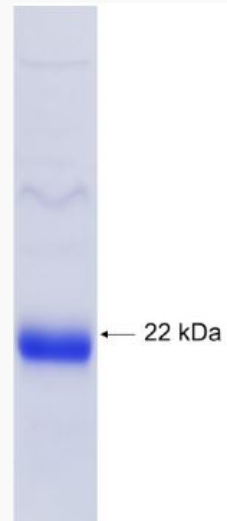
 Tel: 1-631-559-9269 1-516-512-3133

 Email: info@creative-biomart.com  Fax: 1-631-938-8127

 45-1 Ramsey Road, Shirley, NY 11967, USA



SDS-PAGE



Tel: 1-631-559-9269 1-516-512-3133

Email: info@creative-biomart.com Fax: 1-631-938-8127

45-1 Ramsey Road, Shirley, NY 11967, USA