

Recombinant Human WFDC3 Protein, Myc/DDK-tagged, C13 and N15-labeled

Cat. No. WFDC3-2322H **Lot. No.** (See product label)

SPECIFICATION

Product Overview	WFDC3 MS Standard C13 and N15-labeled recombinant protein (NP_542181) with a C-terminal MYC/DDK tag, was expressed in HEK293 cells.
Species	Human
Source	HEK293
Description	<p>This gene encodes a member of the WAP-type four-disulfide core (WFDC) domain family. The WFDC domain, or WAP signature motif, contains eight cysteines forming four disulfide bonds at the core of the protein, and functions as a protease inhibitor.</p> <p>The encoded protein contains four WFDC domains. Most WFDC genes are localized to chromosome 20q12-q13 in two clusters: centromeric and telomeric. This gene belongs to the telomeric cluster. Alternatively spliced transcript variants have been observed but their full-length nature has not been determined.</p>
Molecular Mass	22 kDa
AA Sequence	<pre>MMLSCLFLLKALLALGSLESWITAGEHAKEGECPPDKNPCKELCQGDELCPAEQKC CTTGCGRICRDIPKGRKRDCPRVIRKQSCLKRCITDKTCPGVKKCCTLGCNKSCVVP ISKQKLAIEFGGECPADPLPCEELCDGDASCPQGHKCCSTGCGRTCLGDIEGGRGG DCPKVLVGLCIVGCVMDENCQAGEKCKCKSGCGRFCVPPVLPKLTMNPWNVTRSD SELEIPVPTTRTRPLEQKLISEEDLAANDILDYKDDDDKV</pre>
Purity	> 80% as determined by SDS-PAGE and Coomassie blue staining

 Tel: 1-631-559-9269 1-516-512-3133

 Email: info@creative-biomart.com  Fax: 1-631-938-8127

 45-1 Ramsey Road, Shirley, NY 11967, USA

Stability	Stable for 3 months from receipt of products under proper storage and handling conditions.
Storage	Store at -80 centigrade. Avoid repeated freeze-thaw cycles.
Concentration	50 µg/mL as determined by BCA
Storage Buffer	100 mM glycine, 25 mM Tris-HCl, pH 7.3.

GENE INFORMATION

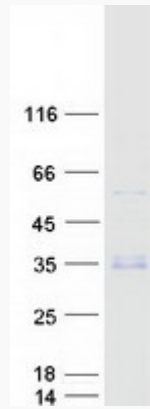
Gene Name	WFDC3 WAP four-disulfide core domain 3 [Homo sapiens (human)]
Official Symbol	WFDC3
Synonyms	WFDC3; WAP four-disulfide core domain 3; WAP four-disulfide core domain protein 3; dJ447F3.3; WAP14; whey acidic protein 14; protease inhibitor WAP14; putative protease inhibitor WAP14;
Gene ID	140686
mRNA Refseq	NM_080614
Protein Refseq	NP_542181
UniProt ID	Q8IUB2

 Tel: 1-631-559-9269 1-516-512-3133

 Email: info@creative-biomart.com  Fax: 1-631-938-8127

 45-1 Ramsey Road, Shirley, NY 11967, USA

SDS-PAGE



 Tel: 1-631-559-9269 1-516-512-3133

 Email: info@creative-biomart.com  Fax: 1-631-938-8127

 45-1 Ramsey Road, Shirley, NY 11967, USA