

Recombinant Human WFDC6 Protein, Myc/DDK-tagged, C13 and N15-labeled

Cat. No. WFDC6-4284H **Lot. No.** (See product label)

SPECIFICATION

Product Overview	WFDC6 MS Standard C13 and N15-labeled recombinant protein (NP_543017) with a C-terminal MYC/DDK tag, was expressed in HEK293 cells.
Species	Human
Source	HEK293
Description	<p>This gene encodes a member of the WAP-type four-disulfide core (WFDC) domain family. The WFDC domain, or WAP signature motif, contains eight cysteines forming four disulfide bonds at the core of the protein, and functions as a protease inhibitor. Most WFDC gene members are localized to chromosome 20q12-q13 in two clusters: centromeric and telomeric. This gene belongs to the telomeric cluster. Read-through transcription exists between this gene and the upstream SPINLW1 (serine peptidase inhibitor-like, with Kunitz and WAP domains 1) gene.</p>
Molecular Mass	9.7 kDa
AA Sequence	MGLSGLLPILVPFILLGDIQEPGHAEGILGKPCPKIKVECEVEEIDQCTKPRDCPENMK CCPFSRGKKCLDFRKVSLTLYHKEELETRTRPLEQKLISEEDLAANDILDYKDDDDKV
Purity	> 80% as determined by SDS-PAGE and Coomassie blue staining
Stability	Stable for 3 months from receipt of products under proper storage and handling conditions.

 Tel: 1-631-559-9269 1-516-512-3133

 Email: info@creative-biomart.com  Fax: 1-631-938-8127

 45-1 Ramsey Road, Shirley, NY 11967, USA

Storage	Store at -80 centigrade. Avoid repeated freeze-thaw cycles.
----------------	---

Concentration	50 µg/mL as determined by BCA
----------------------	-------------------------------

Storage Buffer	100 mM glycine, 25 mM Tris-HCl, pH 7.3.
-----------------------	---

GENE INFORMATION

Gene Name	WFDC6 WAP four-disulfide core domain 6 [Homo sapiens (human)]
------------------	---

Official Symbol	WFDC6
------------------------	-------

Synonyms	WFDC6; WAP four-disulfide core domain 6; WAP6; C20orf171; HEL-S-295; dJ461P17.11; WAP four-disulfide core domain protein 6; epididymis secretory protein Li 295; epididymis secretory sperm binding protein; protease inhibitor WAP6
-----------------	--

Gene ID	140870
----------------	--------

mRNA Refseq	NM_080827
--------------------	-----------

Protein Refseq	NP_543017
-----------------------	-----------

UniProt ID	Q9BQY6
-------------------	--------

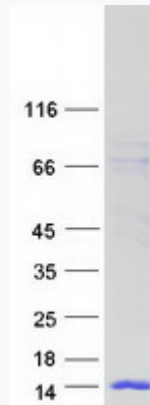
 Tel: 1-631-559-9269 1-516-512-3133

 Email: info@creative-biomart.com  Fax: 1-631-938-8127

 45-1 Ramsey Road, Shirley, NY 11967, USA



SDS-PAGE



Tel: 1-631-559-9269 1-516-512-3133

Email: info@creative-biomart.com Fax: 1-631-938-8127

45-1 Ramsey Road, Shirley, NY 11967, USA