

Recombinant Human WFS1 Protein, His-tagged

Cat. No. WFS1-577H Lot. No. (See product label)

SPECIFICATION

Product Overview	Recombinant Human WFS1 Protein (Met1-Lys300) with N-His tag was expressed in E. coli.
Species	Human
Source	E.coli
ProteinLength	Met1-Lys300
Description	<p>This gene encodes a transmembrane protein, which is located primarily in the endoplasmic reticulum and ubiquitously expressed with highest levels in brain, pancreas, heart, and insulinoma beta-cell lines. Mutations in this gene are associated with Wolfram syndrome, also called DIDMOAD (Diabetes Insipidus, Diabetes Mellitus, Optic Atrophy, and Deafness), an autosomal recessive disorder. The disease affects the brain and central nervous system. Mutations in this gene can also cause autosomal dominant deafness 6 (DFNA6), also known as DFNA14 or DFNA38. Alternatively spliced transcript variants have been found for this gene.</p>
Form	Freeze-dried powder
Molecular Mass	Predicted Molecular Mass: 36.7 kDa Accurate Molecular Mass: 37 kDa
Purity	> 95%

 Tel: 1-631-559-9269 1-516-512-3133

 Email: info@creative-biomart.com  Fax: 1-631-938-8127

 45-1 Ramsey Road, Shirley, NY 11967, USA

Applications	Positive Control; Immunogen; SDS-PAGE; WB.
Stability	The thermal stability is described by the loss rate. The loss rate was determined by accelerated thermal degradation test, that is, incubate the protein at 37 centigrade for 48h, and no obvious degradation and precipitation were observed. The loss rate is less than 5% within the expiration date under appropriate storage condition.
Storage	Avoid repeated freeze/thaw cycles. Store at 2-8 centigrade for one month. Aliquot and store at -80 centigrade for 12 months.
Storage Buffer	20mM Tris, 150mM NaCl, pH8.0, containing 1mM EDTA, 1mM DTT, 0.01% SKL, 5% Trehalose and Proclin300.
Reconstitution	Reconstitute in sterile water to a concentration of 0.1-1.0 mg/mL. Do not vortex.

GENE INFORMATION

Gene Name	WFS1 Wolfram syndrome 1 (wolframin) [Homo sapiens (human)]
Official Symbol	WFS1
Synonyms	WFS1; Wolfram syndrome 1 (wolframin); DFNA6, DFNA14, DFNA38; wolframin; DIDMOAD; WFS; WFRS; WFSL; FLJ51211
Gene ID	7466
mRNA Refseq	NM_001145853
Protein Refseq	NP_001139325
MIM	606201

 Tel: 1-631-559-9269 1-516-512-3133

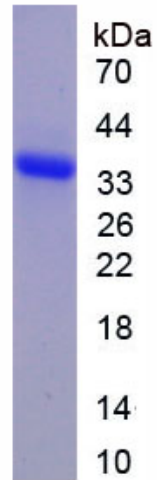
 Email: info@creative-biomart.com  Fax: 1-631-938-8127

 45-1 Ramsey Road, Shirley, NY 11967, USA



UniProt ID

O76024



Tel: 1-631-559-9269 1-516-512-3133

Email: info@creative-biomart.com Fax: 1-631-938-8127

45-1 Ramsey Road, Shirley, NY 11967, USA