

Recombinant Human WFS1 Protein, Myc/DDK-tagged, C13 and N15-labeled

Cat. No. WFS1-6412H **Lot. No.** (See product label)

SPECIFICATION

Product Overview	WFS1 MS Standard C13 and N15-labeled recombinant protein (NP_005996) with a C-terminal MYC/DDK tag, was expressed in HEK293 cells.
Species	Human
Source	HEK293
Description	This gene encodes a transmembrane protein, which is located primarily in the endoplasmic reticulum and ubiquitously expressed with highest levels in brain, pancreas, heart, and insulinoma beta-cell lines. Mutations in this gene are associated with Wolfram syndrome, also called DIDMOAD (Diabetes Insipidus, Diabetes Mellitus, Optic Atrophy, and Deafness), an autosomal recessive disorder. The disease affects the brain and central nervous system. Mutations in this gene can also cause autosomal dominant deafness 6 (DFNA6), also known as DFNA14 or DFNA38. Alternatively spliced transcript variants have been found for this gene.
Molecular Mass	100.3 kDa
AA Sequence	MDSNTAPLGPSCPQPPPAPQPQARSRLNATASLEQERSERPRAPGPQAGPGPGV RDAAAPAEPQAQHTRSRRERADGTGPTKGDMEIPFEEVLERAKAGDPKAQTEVGKH YLQLAGDTDEELNSCTAVDWLVLAQKGRREAVKLLRRCLADRRGITSENEREVRQ LSSETDLERAVRKAALVMYWKLNPKKKKQVAVAELENVGVQVNEHDGGAQPGPVP KSLQKQRRMLERLVSSSESKNYIALDDFVEITKKYAKGVIPSSLFLQDDEDDDELAKGS

 Tel: 1-631-559-9269 1-516-512-3133

 Email: info@creative-biomart.com  Fax: 1-631-938-8127

 45-1 Ramsey Road, Shirley, NY 11967, USA

PEDLPLRLKVVKYPLHAIMEIKEYLIDMASRAGMHWLSTIIPTHHINALIFFFIVSNLTID
 FFAFFIPLVIFYLSFISMVICTLKVFQDSKAWENFRTLTDLLRFEPNLDVEQAEVNFG
 WNHLEPYAHFLLSVFFVIFSFPISKDCIPCSELAVITGFFTVTSYLSLSTHAEPYTRRA
 LATEVTAGLLSLLPSMPLNWPYLKVLGQTFITVPVGHLLVNLVSVPCLLYVYLLYLF
 RMAQLRNFKGTICYLVPYLVCFMWCELSVILLESTGLGLLRASIGYFLFLFALPILVA
 GLALVGVLQFARWFTSLELTKIAVTVAVCSVPLLLRWWTKASFVVGMMVKSLTRSSM
 VKLILVWLTAIVLFCWFYVYRSEGMMKVYNSTLTWQQYGALCGPRAWKETNMARTQI
 LCSHLEGHRVTWTGRFKYVRVTDIDNSAESAINMLPFFIGDWMRCLYGEAYPACSP
 GNTSTAEELCRLKLLAKHPCHIKKFDYKFEITVGMPFSSGADGSRGREDDVTKD
 IVLRASSEFKSVLLSLRQGSLEFSTILEGRLGSKWPVFEKKAISCLNCMAQLSPTRRH
 VKIEHDWRSTVHGAVKFAFDFFFFPFLSAATRTRPLEQKLISEEDLAANDILDYKDDD
 DKV

Purity > 80% as determined by SDS-PAGE and Coomassie blue staining

Stability Stable for 3 months from receipt of products under proper storage and handling conditions.

Storage Store at -80 centigrade. Avoid repeated freeze-thaw cycles.

Concentration 50 µg/mL as determined by BCA

Storage Buffer 100 mM glycine, 25 mM Tris-HCl, pH 7.3.

GENE INFORMATION

Gene Name [WFS1 wolframin ER transmembrane glycoprotein \[Homo sapiens \(human\) \]](#)

Official Symbol [WFS1](#)

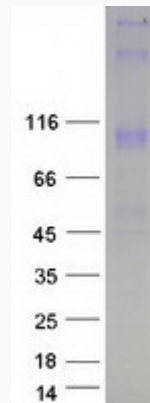
Synonyms WFS1; Wolfram syndrome 1 (wolframin); DFNA6, DFNA14, DFNA38; wolframin;

 Tel: 1-631-559-9269 1-516-512-3133

 Email: info@creative-biomart.com  Fax: 1-631-938-8127

 45-1 Ramsey Road, Shirley, NY 11967, USA

DIDMOAD; WFS; WFRS; WFSL; FLJ51211;

Gene ID 7466**mRNA Refseq** NM_006005**Protein Refseq** NP_005996**MIM** 606201**UniProt ID** O76024**SDS-PAGE** Tel: 1-631-559-9269 1-516-512-3133 Email: info@creative-biomart.com  Fax: 1-631-938-8127 45-1 Ramsey Road, Shirley, NY 11967, USA