

Recombinant Full Length Human WFS1 Protein, C-Flag-tagged

Cat. No. WFS1-852HFL **Lot. No.** (See product label)

SPECIFICATION

Product Overview	Recombinant Full Length Human WFS1 Protein, fused to Flag-tag at C-terminus, was expressed in Mammalian cells.
Species	Human
Source	Mammalian Cells
Description	This gene encodes a transmembrane protein, which is located primarily in the endoplasmic reticulum and ubiquitously expressed with highest levels in brain, pancreas, heart, and insulinoma beta-cell lines. Mutations in this gene are associated with Wolfram syndrome, also called DIDMOAD (Diabetes Insipidus, Diabetes Mellitus, Optic Atrophy, and Deafness), an autosomal recessive disorder. The disease affects the brain and central nervous system. Mutations in this gene can also cause autosomal dominant deafness 6 (DFNA6), also known as DFNA14 or DFNA38. Alternatively spliced transcript variants have been found for this gene.
Form	25 mM Tris HCl, pH 7.3, 100 mM glycine, 10% glycerol.
Molecular Mass	100.1 kDa
AA Sequence	MDSNTAPLGPSCPQPPAPQPQARSRLNATASLEQERSERPRAPGPQAGPGPGV RDAAAPAEPQAQHTRS RERADGTGPTKGDMEIPFEEVLERAKAGDPKAQTEVGKH YLQLAGDTDEELNSCTAVDWLVLA AKQGRRE AVKLLRRCLADRRGITSENEREVRQ LSSETDLERAVRKAALVMYWKLNPKKKKQVAVAELENVGVQVNEH DGGAQPGPVP KSLQKQRRMLERLVSSSESKNYIALDDFVEITKKYAKGVIPSSLFLQDDEDDDELAGKS

 Tel: 1-631-559-9269 1-516-512-3133

 Email: info@creative-biomart.com  Fax: 1-631-938-8127

 45-1 Ramsey Road, Shirley, NY 11967, USA

PE DLPLRLKVVKYPLHAIMEIKEYLIDMASRAGMHWLSTIIPTHHINALIFFFIVSNLTID
 FFAFFIPLVIF YLSFISMVICTLKVFQDSKAWENFRTLTDLLRFEPNLDVEQAEVNFG
 WNHLEPYAHFLLSVFFVIFSFP IASKDCIPCSELAVITGFFTVTSYLSLSTHAEPYTRR
 ALATEVTAGLLSLLPSMPLNWPYLYKVLGQTFIT VPVGHLLVVLNVSVPCLLYVYLLYLF
 FRMAQLRNFKGTICYLVPYLVCFMWCELSVILLESTGLGLLRAS IGYFLFLFALPIL
 VAGLALVGVLQFARWFTSLELTKIAVTVAVCSVPLLLRWWTKASFVVMVKSLTRS
 SMVKLILVWLTAIVLFCWFYVYRSEGMKVYNSTLTWQQYGALCGPRAWKETNMAR
 TQILCSHLEGHRVTW TGRFKYVRVTDIDNSAESAINMLPFFIGDWMRCLYGEAYPA
 CSPGNTSTAEELCRLKLLAKHPCHIKKF DRYKFEITVGMPFSSGADGSRGREDD
 VTKDIVLRASSEFKSVLLSLRQGSLEIFSTILEGRLGSKWPVF
 ELKAISCLNCMAQLSPTRRHVKIEHDWRSTVHGAVKFAFDFFFFPFLSAATRTRPLE
 QKLISEEDLAANDILDYKDDDDKV

Purity	> 80% as determined by SDS-PAGE and Coomassie blue staining.
Stability	Stable for 12 months from the date of receipt of the product under proper storage and handling conditions. Avoid repeated freeze-thaw cycles.
Storage	Store at -80 centigrade.
Concentration	>50 ug/mL as determined by microplate BCA method.
Preparation	Recombinant protein was captured through anti-DDK affinity column followed by conventional chromatography steps.
Protein Families	Druggable Genome, Transmembrane
Full Length	Full L.

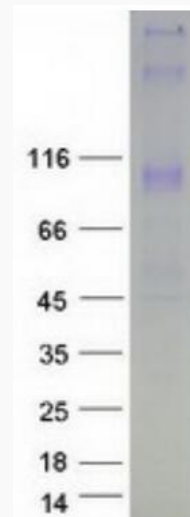
GENE INFORMATION

 Tel: 1-631-559-9269 1-516-512-3133

 Email: info@creative-biomart.com  Fax: 1-631-938-8127

 45-1 Ramsey Road, Shirley, NY 11967, USA

Gene Name	WFS1 wolframin ER transmembrane glycoprotein [Homo sapiens (human)]
Official Symbol	WFS1
Synonyms	WFS; WFRS; WFSL; CTRCT41
Gene ID	7466
mRNA Refseq	NM_006005.3
Protein Refseq	NP_005996.2
MIM	606201
UniProt ID	O76024



Coomassie blue staining of purified WFS1 protein.

 Tel: 1-631-559-9269 1-516-512-3133

 Email: info@creative-biomart.com  Fax: 1-631-938-8127

 45-1 Ramsey Road, Shirley, NY 11967, USA