

# Recombinant Human WHSC1L1 Protein (1-645 aa), His-tagged

Cat. No. WHSC1L1-2631H Lot. No. (See product label)

## SPECIFICATION

**Product Overview** Recombinant Human WHSC1L1 Protein (1-645 aa) is produced by Yeast expression system. This protein is fused with a 6xHis tag at the N-terminal. Research Area: Epigenetics and Nuclear Signaling. Protein Description: Full Length of Isoform 3.

**Species** Human

**Source** Yeast

**ProteinLength** 1-645 aa

**Form** Tris-based buffer, 50% glycerol

**Molecular Mass** 73.9 kDa

**AA Sequence**

```

MDFSFSFMQGIMGNTIQPPQLIDSANIRQEDAFDNNSDIAEDGGQTPYEATLQQGF
QYPATTEDLPPLTNGYPSSISVYETQTKYQSYNQYPNGSANGFGAVRNFSPTDYYH
SEIPNTRPHEILEKPSPPQPPPPSVPQTVIPKKTGSPEIKLKITKTIQNGRELFESSLC
GDLLNEVQASEHTKSKHESRKEKRKSNKHDSRRSEERKSHKIPKLEPEEQNRPNR
RVDTVSEKPREEPVLKEEAPVQPILSSVPTTEVSTGVKFQVGLVWSKVGTYPWWP
CMVSSDPQLEVHTKINTRGAREYHVQFFSNQPERAWVHEKRVREYKGHKQYEELL
AEATKQASNHSEKQKIRKPRPQRERAQWDIGIAHAEKALKMTREERIEQYTFIYIDKQ
PEEALSQAKKSVASKTEVKKTRRPRSVLNTQPEQTNAGEVASSLSSTEIRRHSQRR
HTSAEEEEPPPVKIAWKTAARKSLPASITMHKGSLLDQKCNMSPVVKIEQVFALQN
ATGDGKFIDQFVYSTKGIGNKTEISVRGQDRLIISTPNQRNEKPTQSVSSPEATSGST
GSVEKKQQRRSIRTRSESEKSTEVVPPKKKIKKEQVETVPQATVKTGLQKGSADRGV
    
```

 Tel: 1-631-559-9269 1-516-512-3133

 Email: [info@creative-biomart.com](mailto:info@creative-biomart.com)  Fax: 1-631-938-8127

 45-1 Ramsey Road, Shirley, NY 11967, USA

QGSVRFSDSSVSAIEETVD

**Purity** > 85% as determined by SDS-PAGE.

**Notes** Repeated freezing and thawing is not recommended. Store working aliquots at 4 centigrade for up to one week.

**Storage** The shelf life is related to many factors, storage state, buffer ingredients, storage temperature and the stability of the protein itself. Generally, the shelf life of liquid form is 6 months at -20 centigrade/-80 centigrade. The shelf life of lyophilized form is 12 months at -20 centigrade/-80 centigrade.

**Concentration** A hardcopy of COA will be sent along with the products. Please refer to it for detailed information.

## GENE INFORMATION

**Gene Name** [WHSC1L1 Wolf-Hirschhorn syndrome candidate 1-like 1 \[ Homo sapiens \]](#)

**Official Symbol** [WHSC1L1](#)

**Synonyms** WHSC1L1; FLJ20353; NSD3; protein whistle; WHSC1-like protein 1; pp14328; MGC126766; MGC142029; DKFZp667H044;

**Gene ID** [54904](#)

**mRNA Refseq** [NM\\_017778](#)

**Protein Refseq** [NP\\_060248](#)

**MIM** [607083](#)

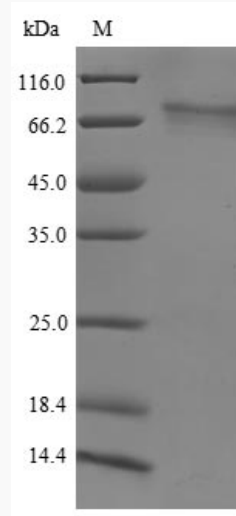
 Tel: 1-631-559-9269 1-516-512-3133

 Email: [info@creative-biomart.com](mailto:info@creative-biomart.com)  Fax: 1-631-938-8127

 45-1 Ramsey Road, Shirley, NY 11967, USA

UniProt ID

Q9BZ95



(Tris-Glycine gel) Discontinuous SDS-PAGE (reduced) with 5% enrichment gel and 15% separation gel.

Tel: 1-631-559-9269 1-516-512-3133

Email: [info@creative-biomart.com](mailto:info@creative-biomart.com) Fax: 1-631-938-8127

45-1 Ramsey Road, Shirley, NY 11967, USA