

Recombinant Human WIF1 protein, His-tagged

Cat. No. WIF1-2698H **Lot. No.** (See product label)

SPECIFICATION

Product Overview	Recombinant Human WIF-1(Q166K) Protein is produced by HEK293 cells expression system. The target protein is expressed with sequence (Gly29-Trp379(Gln166Lys)) of human WIF-1 (Accession #NP_009122.2) fused with a 6×His tag at the C-terminus.
Species	Human
Source	HEK293
ProteinLength	Gly29-Trp379(Gln166Lys)
Form	Lyophilized from a 0.22 µm filtered solution of 20mM HAc-NaAc, 150mM NaCl, 0.5% CHAPS, pH 6.0.
Molecular Mass	50 kDa
Endotoxin	< 0.1 EU/µg of the protein by LAL method.
Purity	> 97% by SDS-PAGE.
Storage	Store the lyophilized protein at -20°C to -80 °C for long term. After reconstitution, the protein solution is stable at -20 °C for 3 months, at 2-8 °C for up to 1 week.
Reconstitution	Reconstitute to a concentration of 0.1-0.5 mg/mL in sterile distilled water.

 Tel: 1-631-559-9269 1-516-512-3133

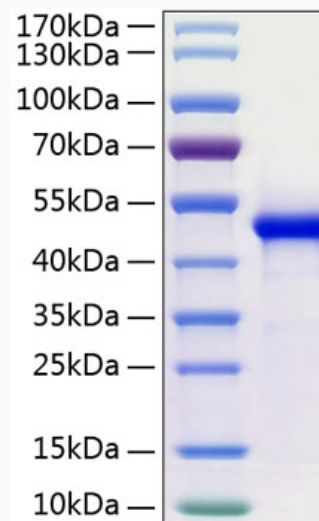
 Email: info@creative-biomart.com  Fax: 1-631-938-8127

 45-1 Ramsey Road, Shirley, NY 11967, USA

GENE INFORMATION

Gene Name	WIF1 WNT inhibitory factor 1 [Homo sapiens]
Official Symbol	WIF1
Synonyms	WIF1; WNT inhibitory factor 1; wnt inhibitory factor 1; WIF-1;
Gene ID	11197
mRNA Refseq	NM_007191
Protein Refseq	NP_009122
MIM	605186
UniProt ID	Q9Y5W5

SDS-PAGE



Tel: 1-631-559-9269 1-516-512-3133

Email: info@creative-biomart.com Fax: 1-631-938-8127

45-1 Ramsey Road, Shirley, NY 11967, USA