

## Recombinant Human WIF1 protein, His-tagged

**Cat. No.** WIF1-30862TH    **Lot. No.** (See product label)

### SPECIFICATION

<b>Product Overview</b>	Recombinant Human WIF1(29-379aa) fused with His tag at C-terminal was expressed in Insect cells.
<b>Species</b>	Human
<b>Source</b>	Insect Cells
<b>ProteinLength</b>	29-379 a.a.
<b>Description</b>	Wnt inhibitory factor 1, also known as Wif-1, is a secreted protein that binds to Wnt proteins involved in the embryonic development and cancer, and inhibits their activity. Wif-1 protein contains a WNT inhibitory factor (WIF) domain and 5 epidermal growth factor (EGF)-like domains. It may be involved in mesoderm segmentation. This protein is found to be present in fish, amphibia and mammals.
<b>Form</b>	Liquid. In Phosphate Buffered Saline (pH 7.4) containing 20% glycerol, 0.1mM PMSF, 1mM DTT
<b>Molecular Mass</b>	39.5 kDa (360 aa) 40-57 KDa (SDS-PAGE under reducing conditions)
<b>AA Sequence</b>	ADLGPPQEES LYLWIDAHQA RVLIGFEEDI LIVSEGKMAP FTTHDFRKAQQ RMPAIPVNIH SMNFTWQAAG QAEYFYEFLS LRSLDKGIMA DPTVNVPLLGTVPHKASVVQ VGFPCLGKQD GVAAFEVDVI VMNSEGNTIL QTPQNAIFFK TCQQAECPPG CRNGGFCNER RICECPDGFH GPHCEKALCT PRCMNGGLCVTPGFCICPPG FYGVNCDKAN CSTTCFNGGT CFYPGKICIP

 Tel: 1-631-559-9269    1-516-512-3133

 Email: [info@creative-biomart.com](mailto:info@creative-biomart.com)     Fax: 1-631-938-8127

 45-1 Ramsey Road, Shirley, NY 11967, USA

PGLEGEQCEI SKCPQPCRNG GKCIGKSKCK CSKGYQGDLG SKPVCEPGCG  
 AHGTCHEPNKCQCQEGWHGR HCNKRYEASL IHALRPAGAQ LRQHTPSLKK  
 AEERRDPPES NYIWHHHHHH

**Endotoxin** < 1.0 EU per 1 microgram of protein (determined by LAL method)

**Purity** > 90% by SDS - PAGE

**Storage** Can be stored at +4 centigrade short term (1-2 weeks). For long term storage, aliquot and store at -20 centigrade or -70 centigrade. Avoid repeated freezing and thawing cycles.

**Concentration** 0.20mg/ml (determined by Bradford assay)

## GENE INFORMATION

**Gene Name** WIF1 WNT inhibitory factor 1 [ Homo sapiens ]

**Official Symbol** WIF1

**Synonyms** WIF1; WNT inhibitory factor 1; wnt inhibitory factor 1; WIF-1;

**Gene ID** 11197

**mRNA Refseq** NM\_007191

**Protein Refseq** NP\_009122

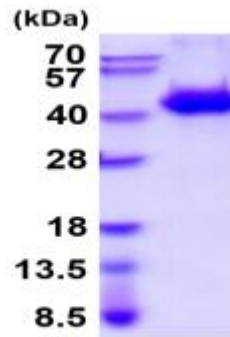
**MIM** 605186

**UniProt ID** Q9Y5W5

 Tel: 1-631-559-9269 1-516-512-3133

 Email: [info@creative-biomart.com](mailto:info@creative-biomart.com)  Fax: 1-631-938-8127

 45-1 Ramsey Road, Shirley, NY 11967, USA



15% SDS-PAGE (3 $\mu$ g)

 Tel: 1-631-559-9269 1-516-512-3133

 Email: [info@creative-biomart.com](mailto:info@creative-biomart.com)  Fax: 1-631-938-8127

 45-1 Ramsey Road, Shirley, NY 11967, USA