

Recombinant Human WIPF1 Protein, Myc/DDK-tagged, C13 and N15-labeled

Cat. No. WIPF1-3055H **Lot. No.** (See product label)

SPECIFICATION

Product Overview

WIPF1 MS Standard C13 and N15-labeled recombinant protein (NP_001070737) with a C-terminal MYC/DDK tag, was expressed in HEK293 cells.

Species

Human

Source

HEK293

Description

This gene encodes a protein that plays an important role in the organization of the actin cytoskeleton. The encoded protein binds to a region of Wiskott-Aldrich syndrome protein that is frequently mutated in Wiskott-Aldrich syndrome, an X-linked recessive disorder. Impairment of the interaction between these two proteins may contribute to the disease. Two transcript variants encoding the same protein have been identified for this gene.

Molecular Mass

51.1 kDa

AA Sequence

MPVPPPAPPPPPTFALANTEKPTLNKTEQAGRNALLSDISKGKLLKKTVTNDRSAPI
 LDKPKGAGAGGGGGGFGGGGGFGGGGGGGGGGSGGGGPPGLGGLFQAGMPK
 LRSTANRDNDSSGSRPPLLPPGGRSTSAKPFSPPSGPRFPVPSGHRSGPPEPQ
 RNRMPPRPDPVSKPDSIPPPVPSTPRPIQSSSLHNRGSPVPVGGPRQPSPGPTPPP
 FPGNRGTALGGGSIRQSPLSSSSPFSNRPPLPPTPSRALDDKPPPPPPPVGNRPSIH
 REAVPPPPPQNNKPPVPSTPRPSASSQAPPPPPPSRPGPPPLPPSSSGNDET PRL
 PQRNLSLSSSTPPLPSPGRSGPLPPPPSERPPPPVRDPPGRSGPLPPPPVSRNGS

 Tel: 1-631-559-9269 1-516-512-3133

 Email: info@creative-biomart.com  Fax: 1-631-938-8127

 45-1 Ramsey Road, Shirley, NY 11967, USA

TSRALPATPQLPSRSGVDSRSGPRPPLPPDRPSAGAPPPPPSTSIIRNGFQDSPC
 EDEWESRFYFHPISDLPPPEPYVQTTKSYPSKLARNESRSGSNRRERGAAPLPPPIR
 TRTRPLEQKLISEEDLAANDILDYKDDDDKV

Purity > 80% as determined by SDS-PAGE and Coomassie blue staining

Stability Stable for 3 months from receipt of products under proper storage and handling conditions.

Storage Store at -80 centigrade. Avoid repeated freeze-thaw cycles.

Concentration 50 µg/mL as determined by BCA

Storage Buffer 100 mM glycine, 25 mM Tris-HCl, pH 7.3.

GENE INFORMATION

Gene Name WIPF1 WAS/WASL interacting protein family member 1 [Homo sapiens (human)]

Official Symbol WIPF1

Synonyms WIPF1; WAS/WASL interacting protein family member 1; WIP; WAS2; PRPL-2; WASPIP; WAS/WASL-interacting protein family member 1; WASP-interacting protein; Wiskott-Aldrich syndrome protein interacting protein; protein PRPL-2; testicular tissue protein Li 226

Gene ID 7456

mRNA Refseq NM_001077269

Protein Refseq NP_001070737

 Tel: 1-631-559-9269 1-516-512-3133

 Email: info@creative-biomart.com  Fax: 1-631-938-8127

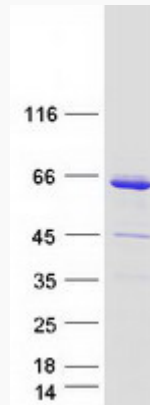
 45-1 Ramsey Road, Shirley, NY 11967, USA



MIM 602357

UniProt ID O43516

SDS-PAGE



Tel: 1-631-559-9269 1-516-512-3133

Email: info@creative-biomart.com Fax: 1-631-938-8127

45-1 Ramsey Road, Shirley, NY 11967, USA