

Active Recombinant Human WISP1 protein, His-tagged

Cat. No. WISP1-2332H Lot. No. (See product label)

SPECIFICATION

Product Overview	Active Recombinant Human WISP1 protein(NP_003873.1) (Met 1-Asn 367) was expressed in HEK293 with a C-terminal polyhistidine tag.
Species	Human
Source	HEK293
ProteinLength	1-367 aa
Form	Lyophilized from sterile PBS, pH 7.4.
Bio-activity	Measured in a cell proliferation assay using NRK-49F rat fibroblasts (Xu, L. et al., 2000, Gene and Dev. 14: 585.). The ED50 for this effect is typically 10-25 µg/ml.
Molecular Mass	The secreted recombinant human WISP1 consisting of 356 amino acids has a calculated molecular mass of 39 kDa. As a result of glycosylation, It migrates as an approximately 55 kDa protein in SDS-PAGE under reducing conditions.
Endotoxin	< 1.0 EU per µg protein as determined by the LAL method.
Purity	> 95 % as determined by SDS-PAGE
Storage	Store it under sterile conditions at -20°C to -80°C upon receiving. Recommend to aliquot the protein into smaller quantities for optimal storage. Avoid repeated freeze-thaw cycles.

 Tel: 1-631-559-9269 1-516-512-3133

 Email: info@creative-biomart.com  Fax: 1-631-938-8127

 45-1 Ramsey Road, Shirley, NY 11967, USA

Reconstitution It is recommended that sterile water be added to the vial to prepare a stock solution of 0.2 ug/ul. Centrifuge the vial at 4°C before opening to recover the entire contents.

GENE INFORMATION

Gene Name WISP1 WNT1 inducible signaling pathway protein 1 [Homo sapiens]

Official Symbol WISP1

Synonyms WISP1; WNT1 inducible signaling pathway protein 1; WNT1-inducible-signaling pathway protein 1; CCN4; CCN family member 4; WNT1 induced secreted protein 1; Wnt-1 inducible signaling pathway protein 1; WISP1c; WISP1i; WISP1tc; FLJ14388;

Gene ID 8840

mRNA Refseq NM_001204869

Protein Refseq NP_001191798

MIM 603398

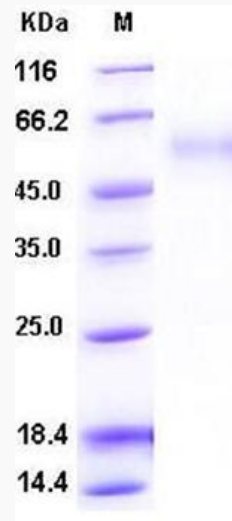
UniProt ID O95388

 Tel: 1-631-559-9269 1-516-512-3133

 Email: info@creative-biomart.com  Fax: 1-631-938-8127

 45-1 Ramsey Road, Shirley, NY 11967, USA

SDS-PAGE



 Tel: 1-631-559-9269 1-516-512-3133

 Email: info@creative-biomart.com  Fax: 1-631-938-8127

 45-1 Ramsey Road, Shirley, NY 11967, USA