

Recombinant Mouse WISP2 Protein (24-251 aa), His-SUMO-tagged

Cat. No. WISP2-1166M **Lot. No.** (See product label)

SPECIFICATION

Product Overview	Recombinant Mouse WISP2 Protein (24-251 aa) is produced by E. coli expression system. This protein is fused with a 6xHis-SUMO tag at the N-terminal. Protein Description: Full Length of Mature Protein.
Species	Mouse
Source	E.coli
ProteinLength	24-251 aa
Description	May play an important role in modulating bone turnover. Promotes the adhesion of osteoblast cells and inhibits the binding of fibrinogen to integrin receptors. In addition, inhibits osteocalcin production.
Form	Tris-based buffer, 50% glycerol
Molecular Mass	40.5 kDa
AA Sequence	QLCPAPCACPWTTPQCPPGVPLVLDGCGCCRVCCARRLGESCDHLHVCDPSQGLV CQPGAGPSGRGAVCLFEEDDGSCEVNGRRYLDGETFKPNCRVLCRCDDGGFTCL PLCSEDVRLPSWDCPRPRRIQVPGRCCPEWVCDQAVMQPAIQSSAQGHQLSALV TPASADGPCPNWSTAWGPCSTTCGLGIATRVSNNRQFCQLEIQRRLLSRPCLASR SHGSWNSAF

 Tel: 1-631-559-9269 1-516-512-3133

 Email: info@creative-biomart.com  Fax: 1-631-938-8127

 45-1 Ramsey Road, Shirley, NY 11967, USA

Purity	> 90% as determined by SDS-PAGE.
Notes	Repeated freezing and thawing is not recommended. Store working aliquots at 4 centigrade for up to one week.
Storage	The shelf life is related to many factors, storage state, buffer ingredients, storage temperature and the stability of the protein itself. Generally, the shelf life of liquid form is 6 months at -20 centigrade/-80 centigrade. The shelf life of lyophilized form is 12 months at -20 centigrade/-80 centigrade.
Concentration	A hardcopy of COA with reconstitution instruction is sent along with the products. Please refer to it for detailed information.

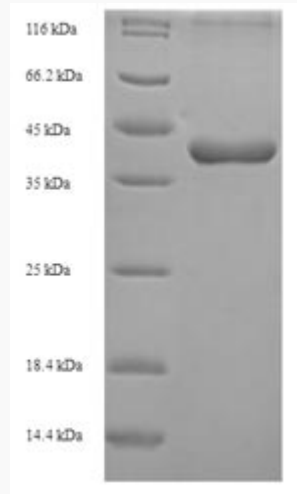
GENE INFORMATION

Gene Name	Wisp2 WNT1 inducible signaling pathway protein 2 [<i>Mus musculus</i>]
Official Symbol	WISP2
Synonyms	WISP2; CTGF-L; WISP-2; Ccn5; Crgr4; Ctgfl; Rcop1;
Gene ID	22403
mRNA Refseq	NM_016873
Protein Refseq	NP_058569
UniProt ID	Q9Z0G4

 Tel: 1-631-559-9269 1-516-512-3133

 Email: info@creative-biomart.com  Fax: 1-631-938-8127

 45-1 Ramsey Road, Shirley, NY 11967, USA



(Tris-Glycine gel) Discontinuous SDS-PAGE (reduced) with 5% enrichment gel and 15% separation gel.

 Tel: 1-631-559-9269 1-516-512-3133

 Email: info@creative-biomart.com  Fax: 1-631-938-8127

 45-1 Ramsey Road, Shirley, NY 11967, USA