

Recombinant Rat Wisp2 protein, His-tagged

Cat. No. WISP2-31R **Lot. No.** (See product label)

SPECIFICATION

Product Overview	Recombinant Rat Wisp2(Leu15~Phe250) fused with His tag at N-terminal was expressed in E. coli.
Species	Rat
Source	E.coli
ProteinLength	Leu15~Phe250
Description	Wisp2 played an important role in many functions.
Form	PBS, pH7.4, containing 0.01% SKL, 1mM DTT, 5% Trehalose and Proclin300
Molecular Mass	27.0kDa
Endotoxin	<1.0EU per 1g (determined by the LAL method)
Purity	> 95%
Applications	Positive Control; Immunogen; SDS-PAGE; WB. If bio-activity of the protein is needed, please check active protein
Stability	The thermal stability is described by the loss rate. The loss rate was determined by accelerated thermal degradation test, that is, incubate the protein at 37 centigrade for 48h, and no obvious degradation and precipitation were observed. The loss rate is

 Tel: 1-631-559-9269 1-516-512-3133

 Email: info@creative-biomart.com  Fax: 1-631-938-8127

 45-1 Ramsey Road, Shirley, NY 11967, USA

less than 5% within the expiration date under appropriate storage condition.

Storage

Avoid repeated freeze/thaw cycles. Store at 2-8 centigrade for one month. Aliquot and store at -80 centigrade for 12 months.

Reconstitution

Reconstitute in PBS or others.

GENE INFORMATION

Gene Name

Wisp2 WNT1 inducible signaling pathway protein 2 [*Rattus norvegicus*]

Official Symbol

Wisp2

Synonyms

WISP2; WNT1 inducible signaling pathway protein 2; WNT1-inducible-signaling pathway protein 2; CTGF-L; WISP-2; CCN family member 5; CCN family protein COP-1; connective tissue growth factor-like protein; CCN5;

Gene ID

29576

mRNA Refseq

NM_031590

Protein Refseq

NP_113778

UniProt ID

Q9JHC6

**Chromosome
Location**

3q42

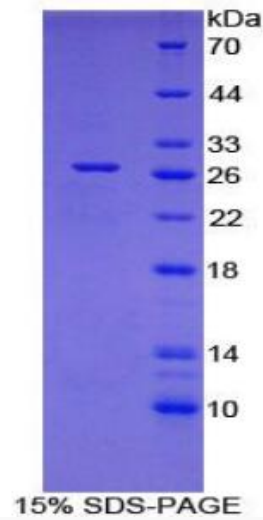
Function

insulin-like growth factor binding;

 Tel: 1-631-559-9269 1-516-512-3133

 Email: info@creative-biomart.com  Fax: 1-631-938-8127

 45-1 Ramsey Road, Shirley, NY 11967, USA



Tel: 1-631-559-9269 1-516-512-3133

Email: info@creative-biomart.com Fax: 1-631-938-8127

45-1 Ramsey Road, Shirley, NY 11967, USA