

## Recombinant Human WNK1 Protein, GST-tagged

**Cat. No.** WNK1-5099H    **Lot. No.** (See product label)

### SPECIFICATION

<b>Product Overview</b>	Human HSN2 full-length ORF ( NP_998820.1, 1 a.a. - 434 a.a.) recombinant protein with GST-tag at N-terminal.
<b>Species</b>	Human
<b>Source</b>	Wheat Germ
<b>Description</b>	This gene encodes a member of the WNK subfamily of serine/threonine protein kinases. The encoded protein may be a key regulator of blood pressure by controlling the transport of sodium and chloride ions. Mutations in this gene have been associated with pseudohypoaldosteronism type II and hereditary sensory neuropathy type II. Alternatively spliced transcript variants encoding different isoforms have been described but the full-length nature of all of them has yet to be determined.[provided by RefSeq, May 2010]
<b>Molecular Mass</b>	73.5 kDa
<b>AA Sequence</b>	<p>MYELLVLFMLIQPQSM AHPCGGTPTYPESQIFFPTIHERPVSFSPPTCPPKVAISQR            RKSTSFLEAQTHHFQPLLRTVGGQSLPPGGSPNTWTPEAVVMLGTTASRVTGESCE            IQVHPMFEPSQVYS DYRPGLVLP EEAHYFIPQEAVYVAGVHYQARVAEQYEGIPYNS            SVLSSPMKQIQPEKPVQGGPTSSSVFEFPPSGQAFLVGH LQNLRLDSGLGPGSPLSSI            SAPISTDATRLKFHPV FVPHSAPAVLTHNNE SR SNCVFEFHVHTPSSSSGEGGGILP            QRVYRNRQVAVDLNQEELPPQSVGLHGYLQPVTEEKHNYHAPELTVSVVEPIGQN            WPIGSPEYSSDSSQITSSDP SDFQSPPTGGAAAPFGSDVSM PFHLPQTVLQESPL</p>

 Tel: 1-631-559-9269    1-516-512-3133

 Email: [info@creative-biomart.com](mailto:info@creative-biomart.com)     Fax: 1-631-938-8127

 45-1 Ramsey Road, Shirley, NY 11967, USA



FFCFPQGTTSQQVLTASFSSGGSALHPQVIGKLPQLF

**Applications**

Enzyme-linked Immunoabsorbent Assay  
Western Blot (Recombinant protein)  
Antibody Production  
Protein Array

**Notes**

Best use within three months from the date of receipt of this protein.

**Storage**

Store at -8 centigrade. Aliquot to avoid repeated freezing and thawing.

**Storage Buffer**

50 mM Tris-HCl, 10 mM reduced Glutathione, pH=8.0 in the elution buffer.

**GENE INFORMATION**

**Gene Name**

WNK1 WNK lysine deficient protein kinase 1 [ Homo sapiens (human) ]

**Official Symbol**

WNK1

**Synonyms**

WNK1; WNK lysine deficient protein kinase 1; KDP; PSK; p65; HSN2; HSN2;  
PRKWNK1; PPP1R167; serine/threonine-protein kinase WNK1; WNK lysine deficient  
protein kinase 1 isoform; erythrocyte 65 kDa protein; prostate-derived sterile 20-like  
kinase; protein kinase with no lysine 1; protein phosphatase 1, regulatory subunit 167;  
serine/threonine-protein kinase WNK1 1; serine/threonine-protein kinase WNK1 2; EC  
2.7.11.1

**Gene ID**

65125

**mRNA Refseq**

NM\_001184985

**Protein Refseq**

NP\_001171914

Tel: 1-631-559-9269 1-516-512-3133

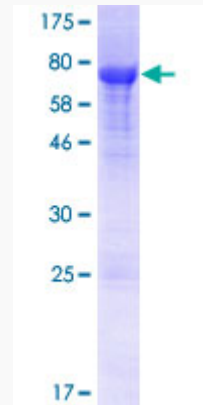
Email: [info@creative-biomart.com](mailto:info@creative-biomart.com) Fax: 1-631-938-8127

45-1 Ramsey Road, Shirley, NY 11967, USA

**MIM** 605232

**UniProt ID** Q9H4A3

**Quality Control  
Testing**



12.5% SDS-PAGE Stained with Coomassie Blue.

 Tel: 1-631-559-9269 1-516-512-3133

 Email: [info@creative-biomart.com](mailto:info@creative-biomart.com)  Fax: 1-631-938-8127

 45-1 Ramsey Road, Shirley, NY 11967, USA