

Recombinant Human WNK1 Protein, His-tagged

Cat. No. WNK1-589H **Lot. No.** (See product label)

SPECIFICATION

Product Overview	Recombinant Human WNK1(Lys1954~Ala2231) fused with His tag at N-terminal was expressed in E. coli.
Species	Human
Source	E.coli
ProteinLength	Lys1954~Ala2231
Description	This gene encodes a member of the WNK subfamily of serine/threonine protein kinases. The encoded protein may be a key regulator of blood pressure by controlling the transport of sodium and chloride ions. Mutations in this gene have been associated with pseudohypoaldosteronism type II and hereditary sensory neuropathy type II. Alternatively spliced transcript variants encoding different isoforms have been described but the full-length nature of all of them has yet to be determined.
Form	PBS, pH7.4, containing 0.01% SKL, 1mM DTT, 5% Trehalose and Proclin300.
Molecular Mass	33.2kDa
Endotoxin	<1.0EU per 1g (determined by the LAL method)
Purity	> 92%
Applications	Positive Control; Immunogen; SDS-PAGE; WB.

 Tel: 1-631-559-9269 1-516-512-3133

 Email: info@creative-biomart.com  Fax: 1-631-938-8127

 45-1 Ramsey Road, Shirley, NY 11967, USA

If bio-activity of the protein is needed, please check active protein.

Stability

The thermal stability is described by the loss rate. The loss rate was determined by accelerated thermal degradation test, that is, incubate the protein at 37 centigrade for 48h, and no obvious degradation and precipitation were observed. The loss rate is less than 5% within the expiration date under appropriate storage condition.

Storage

Avoid repeated freeze/thaw cycles. Store at 2-8 centigrade for one month. Aliquot and store at -80 centigrade for 12 months.

Reconstitution

Reconstitute in PBS or others.

GENE INFORMATION

Gene Name

[WNK1 WNK lysine deficient protein kinase 1 \[Homo sapiens \]](#)

Official Symbol

[WNK1](#)

Synonyms

WNK1; WNK lysine deficient protein kinase 1; hereditary sensory neuropathy, type II , HSN2, PRKWNK1, protein kinase, lysine deficient 1; serine/threonine-protein kinase WNK1; HSN2; erythrocyte 65 kDa protein; protein kinase with no lysine 1; prostate-derived sterile 20-like kinase; WNK lysine deficient protein kinase 1 isoform; KDP; PSK; p65; HSN2; PRKWNK1; KIAA0344; MGC163339; MGC163341;

Gene ID

[65125](#)

mRNA Refseq

[NM_001184985](#)

Protein Refseq

[NP_001171914](#)

MIM

[605232](#)

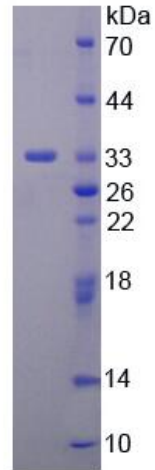
 Tel: 1-631-559-9269 1-516-512-3133

 Email: info@creative-biomart.com  Fax: 1-631-938-8127

 45-1 Ramsey Road, Shirley, NY 11967, USA

UniProt ID

Q9H4A3



15% SDS-PAGE

 Tel: 1-631-559-9269 1-516-512-3133

 Email: info@creative-biomart.com  Fax: 1-631-938-8127

 45-1 Ramsey Road, Shirley, NY 11967, USA