

# Recombinant Human WNK4 Protein, Myc/DDK-tagged, C13 and N15-labeled

**Cat. No.** WNK4-630H    **Lot. No.** (See product label)

## SPECIFICATION

### Product Overview

WNK4 MS Standard C13 and N15-labeled recombinant protein (NP\_115763) with a C-terminal MYC/DDK tag, was expressed in HEK293 cells.

### Species

Human

### Source

HEK293

### Description

This gene encodes a member of the WNK family of serine-threonine protein kinases. The kinase is part of the tight junction complex in kidney cells, and regulates the balance between NaCl reabsorption and K(+) secretion. The kinase regulates the activities of several types of ion channels, cotransporters, and exchangers involved in electrolyte flux in epithelial cells. Mutations in this gene result in pseudohypoaldosteronism type IIB.

### Molecular Mass

134.6 kDa

### AA Sequence

MLASPATETTVLMSQTEADLALRPPPPLGTAGQPRLGPPRRARRFSGKAEPRPRS  
 SRLSRRSSVDLGLLSSWSLPASPAPDPPDPPDSAGPGPARSPSSKEPPEGTWT  
 EGAPVKAEDSARPELPDSAVGPGSREPLRVPEAVALERRREQEEKEDMETQAVA  
 TSPDGRYLKFDIEIGRGSFKTVYRGLDTHTTVEVAWCQLTRKLSRAERQRFSEEVE  
 MLKGLQHPNIVRFYDSWKSVMRQVCIVLVTLMSTGLTKTYLRRFREMKPRVLQR  
 WSRQILRGLHFLHSRVPPILHRDLKCDNVFITGPTGSVKIGDLGLATLKRAFASVIG  
 TPEFMAPEMYEEKYDEAVDVYAFGMCMLEMATSEYPYSECQNAAQIYRKVTSGRK

 Tel: 1-631-559-9269    1-516-512-3133

 Email: [info@creative-biomart.com](mailto:info@creative-biomart.com)     Fax: 1-631-938-8127

 45-1 Ramsey Road, Shirley, NY 11967, USA

PNSFHKVKIPEVKEIIEGCIRTDKNERFTIQDLLAHAFFREERGVHVELAEEDDGEKP  
 GLKLWLRMEDARRGGRPRDNQAIEFLFQLGRDAAEEVAQEMVALGLVCEADYQPV  
 ARAVRERVAAIQRKREKLRKARELEALPPEPGPPPATVPMAPGPPSVFPPEPEEPE  
 ADQHQPFLFRHASYSSTTSDCETDGYLSSSGFLDASDPALQPPGGVPSSLAESHLC  
 LPSAFALSIPRSGPGSDFSPGDSYASDAASGLSDVGEGMGQMRRPPGRNLRRRPR  
 SRLRVTSVSDQNDRVVECQLQTHNSKMVTRFRDLGDSPEEIAAAMVYNEFILPSE  
 RDGFLRRIREIIQRVETLLKRDTGPMEAAEDTLSPQEEPAPLPALPVPLPDPSNEELQ  
 SSTSLEHRSWTAFASTSSSSPGTPLSPGNPFSPGTPISPGPIFPITSPPPCHPSPSPFPI  
 SSQVSSNPSPHPTSSPLPFSSSTPEFPVPLSQCPWSSLPTTSPPTFSPTCSQVTLSS  
 PFFPPCPSTSSFPSTTAAPLLSLASAFSLAVMTVAQSLLSPPGLLSQSPAPPSPPLP  
 SLPLPPPVPAGGQESPSPHTAEVESEASPPPARPLPGEARLAPISEEGKPQLVGRF  
 QVTSSKEPAEPLPLQPTSPTLSGSPKSTPQLTSESDTEDSAGGGPETREALAES  
 DRAAEGLGAGVEEEGDDGKEPQVGGSPQPLSHPSPVWMNYSYSSLCLSSEESSES  
 SGEDEEFWAEQLSLRQKHLSEVETLQTLQKKEIEDLYSRLGKQPPPGIVAPAAMLSS  
 RQRRLSKGSFPTSRRNSLQRSEPPGPGIMRRNSLSGSSTGSQEQRASKGVTFAGD  
 VGRMSGPTRRRLEQKLISEEDLAANDILDYKDDDDKV

<b>Purity</b>	> 80% as determined by SDS-PAGE and Coomassie blue staining
<b>Stability</b>	Stable for 3 months from receipt of products under proper storage and handling conditions.
<b>Storage</b>	Store at -80 centigrade. Avoid repeated freeze-thaw cycles.
<b>Concentration</b>	50 µg/mL as determined by BCA
<b>Storage Buffer</b>	100 mM glycine, 25 mM Tris-HCl, pH 7.3.

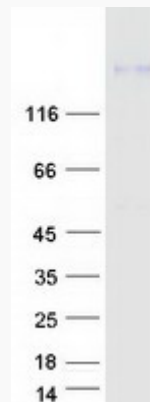
## GENE INFORMATION


 Tel: 1-631-559-9269 1-516-512-3133

 Email: [info@creative-biomart.com](mailto:info@creative-biomart.com)  Fax: 1-631-938-8127

 45-1 Ramsey Road, Shirley, NY 11967, USA

<b>Gene Name</b>	WNK4 putative protein kinase WNK4 [ Homo sapiens (human) ]
<b>Official Symbol</b>	WNK4
<b>Synonyms</b>	WNK4; WNK lysine deficient protein kinase 4; PHA2B; PRKWNK4; serine/threonine-protein kinase WNK4; protein kinase lysine-deficient 4; protein kinase with no lysine 4; EC 2.7.11.1
<b>Gene ID</b>	65266
<b>mRNA Refseq</b>	NM_032387
<b>Protein Refseq</b>	NP_115763
<b>MIM</b>	601844
<b>UniProt ID</b>	Q96J92

**SDS-PAGE**


 Tel: 1-631-559-9269 1-516-512-3133

 Email: [info@creative-biomart.com](mailto:info@creative-biomart.com)  Fax: 1-631-938-8127

 45-1 Ramsey Road, Shirley, NY 11967, USA