

Recombinant Full Length Human WNT16 Protein, C-Flag-tagged

Cat. No. WNT16-1825HFL **Lot. No.** (See product label)

SPECIFICATION

Product Overview	Recombinant Full Length Human WNT16 Protein, fused to Flag-tag at C-terminus, was expressed in Mammalian cells.
Species	Human
Source	Mammalian Cells
Description	The WNT gene family consists of structurally related genes which encode secreted signaling proteins. These proteins have been implicated in oncogenesis and in several developmental processes, including regulation of cell fate and patterning during embryogenesis. This gene is a member of the WNT gene family. It contains two transcript variants diverging at the 5' termini. These two variants are proposed to be the products of separate promoters and not to be splice variants from a single promoter. They are differentially expressed in normal tissues, one of which (variant 2) is expressed at significant levels only in the pancreas, whereas another one (variant 1) is expressed more ubiquitously with highest levels in adult kidney, placenta, brain, heart, and spleen.
Form	25 mM Tris HCl, pH 7.3, 100 mM glycine, 10% glycerol.
Molecular Mass	37.6 kDa
AA Sequence	MDRAALLGLARLRCALWAALLVLFYGAQGNWMWLGIASFVPEKLGCANLPLNSR QKELCKRKPYLLPSI REGARLGIQECGSQFRHERWNCMITAAATTAPMGASPLFGY

 Tel: 1-631-559-9269 1-516-512-3133

 Email: info@creative-biomart.com  Fax: 1-631-938-8127

 45-1 Ramsey Road, Shirley, NY 11967, USA

ELSSGKETAFIYAVMAAGLVHSVTRSCS AGNMTECSCDTTLQNGGSASEGWHW
 GGCSDDVQYGMWFSRKFLDFPIGNTTGKENKVLLAMNLHNNEAGR QAVAKLMSV
 DCRCHGVSGSCAVKTCWKTMSSEKIGHLLKDKYENSIQISDKTKRKMRRREKDQR
 KIPHI KDDLIVNKNSPNYCVEDKKLGIPGTQGRECNRRTSEGADGCNLLCCGRGYNT
 HVVRHVERCECKFIWCCYV RCRRCESMTDVHTCK TRTRPLEQKLISEEDLAANDIL
 DYKDDDDKV

Purity	> 80% as determined by SDS-PAGE and Coomassie blue staining.
Stability	Stable for 12 months from the date of receipt of the product under proper storage and handling conditions. Avoid repeated freeze-thaw cycles.
Storage	Store at -80 centigrade.
Concentration	>50 ug/mL as determined by microplate BCA method.
Preparation	Recombinant protein was captured through anti-DDK affinity column followed by conventional chromatography steps.
Protein Families	Secreted Protein, Transmembrane
Protein Pathways	Basal cell carcinoma, Hedgehog signaling pathway, Melanogenesis, Pathways in cancer, Wnt signaling pathway
Full Length	Full L.

GENE INFORMATION

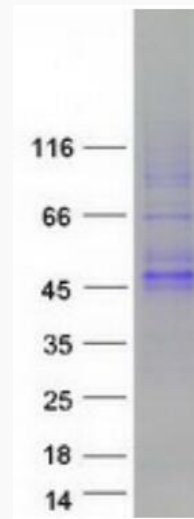
Gene Name	WNT16 Wnt family member 16 [Homo sapiens (human)]
Official Symbol	WNT16

 Tel: 1-631-559-9269 1-516-512-3133

 Email: info@creative-biomart.com  Fax: 1-631-938-8127

 45-1 Ramsey Road, Shirley, NY 11967, USA

Synonyms	wingless-related MMTV integration site 16; wingless-type MMTV integration site family, member 16
Gene ID	51384
mRNA Refseq	NM_057168.2
Protein Refseq	NP_476509.1
MIM	606267
UniProt ID	Q9UBV4



Coomassie blue staining of purified WNT16 protein.

 Tel: 1-631-559-9269 1-516-512-3133

 Email: info@creative-biomart.com  Fax: 1-631-938-8127

 45-1 Ramsey Road, Shirley, NY 11967, USA