

# Recombinant Human WNT16 Protein, Myc/DDK-tagged, C13 and N15-labeled

**Cat. No.** WNT16-2057H    **Lot. No.** (See product label)

## SPECIFICATION

<b>Product Overview</b>	WNT16 MS Standard C13 and N15-labeled recombinant protein (NP_476509) with a C-terminal MYC/DDK tag, was expressed in HEK293 cells.
<b>Species</b>	Human
<b>Source</b>	HEK293
<b>Description</b>	The WNT gene family consists of structurally related genes which encode secreted signaling proteins. These proteins have been implicated in oncogenesis and in several developmental processes, including regulation of cell fate and patterning during embryogenesis. This gene is a member of the WNT gene family. It contains two transcript variants diverging at the 5' termini. These two variants are proposed to be the products of separate promoters and not to be splice variants from a single promoter. They are differentially expressed in normal tissues, one of which (variant 2) is expressed at significant levels only in the pancreas, whereas another one (variant 1) is expressed more ubiquitously with highest levels in adult kidney, placenta, brain, heart, and spleen.
<b>Molecular Mass</b>	37.6 kDa
<b>AA Sequence</b>	MDRAALLGLARLCAALWAALLVLPYGAQGNMWWLGIASFGVPEKLGCANLPLNSR QKELCKRKPYPYLLPSIREGARLGIQECGSQFRHERWNCMITAAATTAPMGASPLFGY ELSSGTKETAFIYAVMAAGLVHSVTRSCSAGNMTECSCDTTLQNGGSASEGWHWG

 Tel: 1-631-559-9269    1-516-512-3133

 Email: [info@creative-biomart.com](mailto:info@creative-biomart.com)     Fax: 1-631-938-8127

 45-1 Ramsey Road, Shirley, NY 11967, USA

GCSDDVQYGMWFSRKFLDFPIGNTTGKENKVLLAMNLHNNEAGRQAVAKLMSVDC  
 RCHGVSGSCAVKTCWKTMSSEFEKIGHLLKDKYENSIQISDKTKRKMRRREKDQRKIP  
 IHKDDLlyVnkSPNYCVEDKklGIPGTQGRECNRTSEGADGCNLLCCGRGYNTHVV  
 RHVERCECKFIWCCYVRCRRCESMTDVHTCKTRTRPLEQKLISEEDLAANDILDYKD  
 DDDKV

**Purity** > 80% as determined by SDS-PAGE and Coomassie blue staining

**Stability** Stable for 3 months from receipt of products under proper storage and handling conditions.

**Storage** Store at -80 centigrade. Avoid repeated freeze-thaw cycles.

**Concentration** 50 µg/mL as determined by BCA

**Storage Buffer** 100 mM glycine, 25 mM Tris-HCl, pH 7.3.

## GENE INFORMATION

**Gene Name** [WNT16 Wnt family member 16 \[ Homo sapiens \(human\) \]](#)

**Official Symbol** [WNT16](#)

**Synonyms** WNT16; wingless-type MMTV integration site family, member 16; protein Wnt-16; wingless-type MMTV integration site family member 16b;

**Gene ID** [51384](#)

**mRNA Refseq** [NM\\_057168](#)

**Protein Refseq** [NP\\_476509](#)

 Tel: 1-631-559-9269 1-516-512-3133

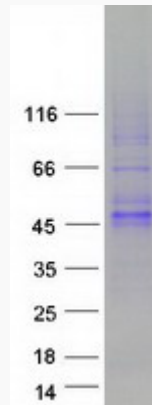
 Email: [info@creative-biomart.com](mailto:info@creative-biomart.com)  Fax: 1-631-938-8127

 45-1 Ramsey Road, Shirley, NY 11967, USA

**MIM** 606267

**UniProt ID** Q9UBV4

**SDS-PAGE**



 Tel: 1-631-559-9269 1-516-512-3133

 Email: [info@creative-biomart.com](mailto:info@creative-biomart.com)  Fax: 1-631-938-8127

 45-1 Ramsey Road, Shirley, NY 11967, USA