

Recombinant Human WNT2B Protein, His tagged

Cat. No. WNT2B-07H **Lot. No.** (See product label)

SPECIFICATION

Product Overview	Purified recombinant protein of Human wingless-type MMTV integration site family, member 2B (WNT2B), transcript variant WNT-2B1, Tyr250-Glu350, with N-terminal His tag, expressed in E. coli.
Species	Human
Source	E.coli
ProteinLength	250-350 aa
Description	This gene encodes a member of the wingless-type MMTV integration site (WNT) family of highly conserved, secreted signaling factors. WNT family members function in a variety of developmental processes including regulation of cell growth and differentiation and are characterized by a WNT-core domain. This gene may play a role in human development as well as carcinogenesis. Alternative splicing results in multiple transcript variants.
Molecular Weight	11.1 kDa
Purity	> 80% as determined by SDS-PAGE and Coomassie blue staining
Notes	For testing in cell culture applications, please filter before use. Note that you may experience some loss of protein during the filtration process.
Stability	Stable for 12 months from the date of receipt of the product under proper storage and

 Tel: 1-631-559-9269 1-516-512-3133

 Email: info@creative-biomart.com  Fax: 1-631-938-8127

 45-1 Ramsey Road, Shirley, NY 11967, USA

handling conditions. Avoid repeated freeze-thaw cycles.

Storage Store at -80 centigrade.

Storage Buffer 50 mM Tris-HCl, pH 8.0, 8 M urea

Concentration >0.05 µg/µL as determined by microplate BCA method

GENE INFORMATION

Gene Name [WNT2B Wnt family member 2B \[Homo sapiens \(human\) \]](#)

Official Symbol [WNT2B](#)

Synonyms WNT2B; wingless-type MMTV integration site family, member 2B; WNT13; protein Wnt-2b; wingless type MMTV integration site family; member 13; XWNT2; Xenopus; homolog of; XWNT2, Xenopus, homolog of; wingless-type MMTV integration site family, member 13

Gene ID [7482](#)

mRNA Refseq [NM_004185](#)

Protein Refseq [NP_004176](#)

MIM [601968](#)

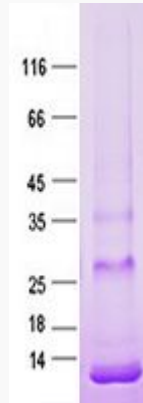
UniProt ID [Q93097](#)

 Tel: 1-631-559-9269 1-516-512-3133

 Email: info@creative-biomart.com  Fax: 1-631-938-8127

 45-1 Ramsey Road, Shirley, NY 11967, USA

SDS-PAGE



 Tel: 1-631-559-9269 1-516-512-3133

 Email: info@creative-biomart.com  Fax: 1-631-938-8127

 45-1 Ramsey Road, Shirley, NY 11967, USA