

## Recombinant Mouse WNT3 Protein, His-SUMO-tagged

Cat. No. WNT3-5163M Lot. No. (See product label)

### SPECIFICATION

<b>Product Overview</b>	Recombinant Mouse WNT3 Protein(NP_033547.1)(22-355aa), fused to two N-terminal tags, His tag and SUMO tag, was expressed in E. coli.
<b>Species</b>	Mouse
<b>Source</b>	E.coli
<b>ProteinLength</b>	22-355aa
<b>Form</b>	If the delivery form is liquid, the default storage buffer is Tris/PBS-based buffer, 5%-50% glycerol. If the delivery form is lyophilized powder, the buffer before lyophilization is Tris/PBS-based buffer, 6% Trehalose, pH 8.0.
<b>Molecular Mass</b>	53.5kDa
<b>AA Sequence</b>	GYPIWWSLALGQQYTSLASQPLLCSIPGLVPKQLRFCRNYIEIMPSVAEGVKLGIQE CQHQFRGRRWNCTTIDDSLAIFGPVLDKATRESAFVHAIASAGVAFVTRSCAEGTS TICGCDSHHKGPPGEGWKWGGCEDADFGVLVSREFADARENRPDARSAMNKHN NEAGRRTILDHMHKCKCHGLSGSCEVKTCWWAQPDFRAIGDFLKDKYDSASEMV VEKHRESRGWVETLRAKYALFKPPTERDLVYYENSPNFCEPNPETGSGFTRDRTCN VTSHGIDGCDLLCCGRGHNTRTEKRKEKCHCVFHWCCYVSCQECIRIYDVHTCK
<b>Purity</b>	Greater than 90% as determined by SDS-PAGE.

 Tel: 1-631-559-9269 1-516-512-3133

 Email: [info@creative-biomart.com](mailto:info@creative-biomart.com)  Fax: 1-631-938-8127

 45-1 Ramsey Road, Shirley, NY 11967, USA

<b>Notes</b>	Repeated freezing and thawing is not recommended. Store working aliquots at 4°C for up to one week.
<b>Storage</b>	Store at -20°C upon receipt, aliquoting is necessary for multiple use. Avoid repeated freeze-thaw cycles.
<b>Reconstitution</b>	We recommend that this vial be briefly centrifuged prior to opening to bring the contents to the bottom. Please reconstitute protein in deionized sterile water to a concentration of 0.1-1.0 mg/mL. We recommend to add 5-50% of glycerol (final concentration) and aliquot for long-term storage at -20°C/-80°C. Our default final concentration of glycerol is 50%. Customers could use it as reference.

## GENE INFORMATION

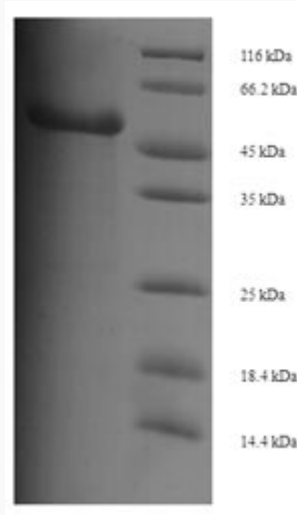
<b>Gene Name</b>	Wnt3 wingless-type MMTV integration site family, member 3 [ <i>Mus musculus</i> (house mouse) ]
<b>Official Symbol</b>	Wnt3
<b>Synonyms</b>	Int; Wnt-; Int-4; Wnt-3
<b>Gene ID</b>	22415
<b>mRNA Refseq</b>	NM_009521.2
<b>Protein Refseq</b>	NP_033547.1
<b>UniProt ID</b>	P17553

 Tel: 1-631-559-9269 1-516-512-3133

 Email: [info@creative-biomart.com](mailto:info@creative-biomart.com)  Fax: 1-631-938-8127

 45-1 Ramsey Road, Shirley, NY 11967, USA

**SDS-PAGE**



 Tel: 1-631-559-9269 1-516-512-3133

 Email: [info@creative-biomart.com](mailto:info@creative-biomart.com)  Fax: 1-631-938-8127

 45-1 Ramsey Road, Shirley, NY 11967, USA