

Recombinant Human WNT6 Protein, His&ABP-tagged

Cat. No. WNT6-7H Lot. No. (See product label)

SPECIFICATION

Product Overview	Recombinant Human WNT6 Protein, His&ABP-tagged, expressed in E. coli.
Species	Human
Source	E.coli
ProteinLength	Pro32-Phe82aa
Description	<p>The WNT gene family consists of structurally related genes which encode secreted signaling proteins. These proteins have been implicated in oncogenesis and in several developmental processes, including regulation of cell fate and patterning during embryogenesis. This gene is a member of the WNT gene family. It is overexpressed in cervical cancer cell line and strongly coexpressed with another family member, WNT10A, in colorectal cancer cell line. The gene overexpression may play key roles in carcinogenesis. This gene and the WNT10A gene are clustered in the chromosome 2q35 region. The protein encoded by this gene is 97% identical to the mouse Wnt6 protein at the amino acid level.</p>
Tag	His&ABP
Molecular Mass	20.9 kDa
Purity	> 80% as determined by SDS-PAGE and Coomassie blue staining
Notes	For testing in cell culture applications, please filter before use. Note that you may

 Tel: 1-631-559-9269 1-516-512-3133

 Email: info@creative-biomart.com  Fax: 1-631-938-8127

 45-1 Ramsey Road, Shirley, NY 11967, USA

experience some loss of protein during the filtration process.

Stability

Stable for 12 months from the date of receipt of the product under proper storage and handling conditions. Avoid repeated freeze-thaw cycles.

Storage

Store at -80°C.

Concentration

>0.05 µg/µL as determined by microplate BCA method

Storage Buffer

25 mM Tris-HCl, pH 8.0, 150 mM NaCl, 10% glycerol

GeneID

7475

GENE INFORMATION

Gene Name

WNT6 Wnt family member 6 [Homo sapiens (human)]

Official Symbol

WNT6

Synonyms

WNT6,wingless-type MMTV integration site family member 6, protein Wnt-6

mRNA Refseq

NM_006522

Protein Refseq

NP_006513

MIM

604663

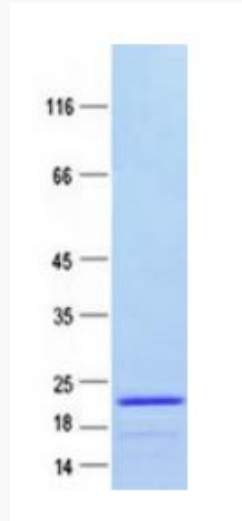
UniProt ID

Q9Y6F9

 Tel: 1-631-559-9269 1-516-512-3133

 Email: info@creative-biomart.com  Fax: 1-631-938-8127

 45-1 Ramsey Road, Shirley, NY 11967, USA



Tel: 1-631-559-9269 1-516-512-3133

Email: info@creative-biomart.com Fax: 1-631-938-8127

45-1 Ramsey Road, Shirley, NY 11967, USA