

Recombinant Human WNT7B Protein, His&SUMO-tagged

Cat. No. WNT7B-588H Lot. No. (See product label)

SPECIFICATION

Product Overview	Recombinant Human WNT7B Protein (Thr216-Lys349) with N-His&SUMO tag was expressed in E. coli.
Species	Human
Source	E.coli
ProteinLength	Thr216-Lys349
Description	This gene is a member of the WNT gene family, which consists of structurally related genes that encode secreted signaling proteins. These proteins have been implicated in oncogenesis and in several developmental processes, including regulation of cell fate and patterning during embryogenesis. Among members of the human WNT family, this gene product is most similar to WNT7A protein.
Form	Freeze-dried powder
Molecular Mass	Predicted Molecular Mass: 29.1 kDa Accurate Molecular Mass: 34 kDa
Purity	> 90%
Applications	Positive Control; Immunogen; SDS-PAGE; WB.
Stability	The thermal stability is described by the loss rate. The loss rate was determined by

 Tel: 1-631-559-9269 1-516-512-3133

 Email: info@creative-biomart.com  Fax: 1-631-938-8127

 45-1 Ramsey Road, Shirley, NY 11967, USA

accelerated thermal degradation test, that is, incubate the protein at 37 centigrade for 48h, and no obvious degradation and precipitation were observed. The loss rate is less than 5% within the expiration date under appropriate storage condition.

Storage

Avoid repeated freeze/thaw cycles. Store at 2-8 centigrade for one month. Aliquot and store at -80 centigrade for 12 months.

Storage Buffer

20mM Tris, 150mM NaCl, pH8.0, containing 1mM EDTA, 1mM DTT, 0.01% SKL, 5% Trehalose and Proclin300.

Reconstitution

Reconstitute in sterile water to a concentration of 0.1-1.0 mg/mL. Do not vortex.

GENE INFORMATION

Gene Name

WNT7B wingless-type MMTV integration site family, member 7B [Homo sapiens (human)]

Official Symbol

WNT7B

Synonyms

WNT7B; wingless-type MMTV integration site family, member 7B; protein Wnt-7b

Gene ID

7477

mRNA Refseq

NM_058238

Protein Refseq

NP_478679

MIM

601967

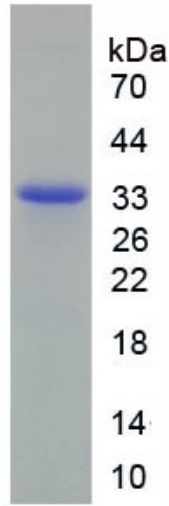
UniProt ID

P56706

 Tel: 1-631-559-9269 1-516-512-3133

 Email: info@creative-biomart.com  Fax: 1-631-938-8127

 45-1 Ramsey Road, Shirley, NY 11967, USA



Tel: 1-631-559-9269 1-516-512-3133

Email: info@creative-biomart.com Fax: 1-631-938-8127

45-1 Ramsey Road, Shirley, NY 11967, USA