

Recombinant Human WRN Protein, 517-1093, N-GST tagged

Cat. No. WRN-12H Lot. No. (See product label)

SPECIFICATION

Product Overview	Recombinant human WRN (Werner syndrome ATP-dependent helicase), encompassing amino acids 517-1093. This construct contains an N-terminal GST-tag followed by a Thrombin cleavage site. The recombinant protein was affinity purified.
Species	Human
Source	Sf9 Cells
ProteinLength	517-1093
Description	This gene encodes a member of the RecQ subfamily of DNA helicase proteins. The encoded nuclear protein is important in the maintenance of genome stability and plays a role in DNA repair, replication, transcription and telomere maintenance. This protein contains a N-terminal 3' to 5' exonuclease domain, an ATP-dependent helicase domain and RQC (RecQ helicase conserved region) domain in its central region, and a C-terminal HRDC (helicase RNase D C-terminal) domain and nuclear localization signal. Defects in this gene are the cause of Werner syndrome, an autosomal recessive disorder characterized by accelerated aging and an elevated risk for certain cancers.
Form	Aqueous buffer solution
Molecular Mass	92 kDa
Purity	0.9

 Tel: 1-631-559-9269 1-516-512-3133

 Email: info@creative-biomart.com  Fax: 1-631-938-8127

 45-1 Ramsey Road, Shirley, NY 11967, USA

Notes	Avoid freeze/thaw cycles
Usage	Thaw on ice and gently mix prior to use. DO NOT VORTEX. Perform a quick spin before opening. Aliquot into small volumes and flash freeze for long term storage. Avoid multiple freeze/thaw cycles.
Storage	At least 6 months at -80 centigrade.
Storage Buffer	40 mM Tris-HCl, pH 8.0, 200 mM NaCl, 2.2 mM KCl, 0.05% Tween-20, 10 mM glutathione, 1 mM TCEP, and 20% glycerol
Shipping	At -80 centigrade

GENE INFORMATION

Gene Name	WRN WRN RecQ like helicase [Homo sapiens (human)]
Official Symbol	WRN
Synonyms	WRN; WRN RecQ like helicase; RECQ3; RECQL2; RECQL3; bifunctional 3'-5' exonuclease/ATP-dependent helicase WRN; DNA helicase, RecQ-like type 3; Werner syndrome ATP-dependent helicase; Werner syndrome RecQ like helicase; Werner syndrome protein; Werner syndrome, RecQ helicase-like; exonuclease WRN; recQ protein-like 2; EC 3.6.4.12
Gene ID	7486
mRNA Refseq	NM_000553
Protein Refseq	NP_000544

 Tel: 1-631-559-9269 1-516-512-3133

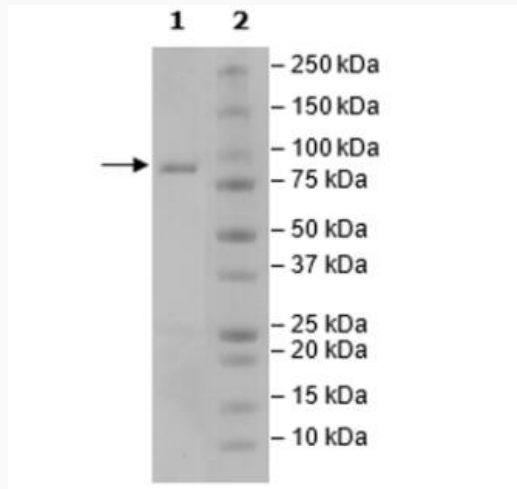
 Email: info@creative-biomart.com  Fax: 1-631-938-8127

 45-1 Ramsey Road, Shirley, NY 11967, USA

MIM 604611

UniProt ID Q14191

SDS-PAGE



 Tel: 1-631-559-9269 1-516-512-3133

 Email: info@creative-biomart.com  Fax: 1-631-938-8127

 45-1 Ramsey Road, Shirley, NY 11967, USA